

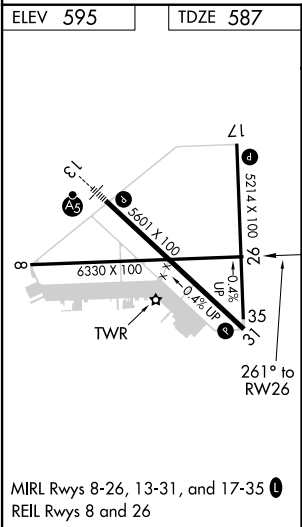
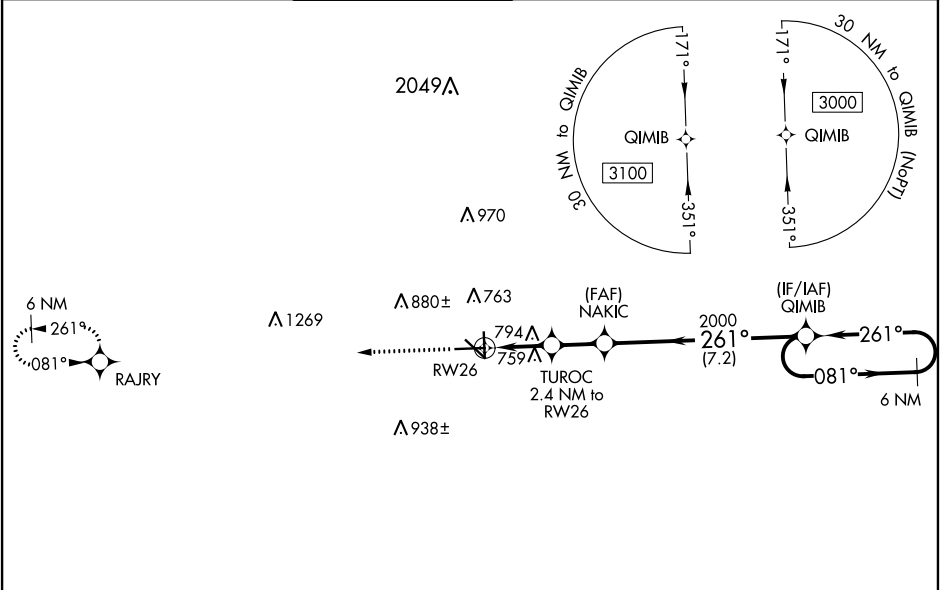
WAAS CH 78332 W26A	APP CRS 261°	Rwy Idg 6330 TDZE 587 Apt Elev 595
--	------------------------	---





RNAV (GPS) RWY 26
SAN MARCOS RGNL (HYI)

▼ Baro-VNAV NA when using New Braunfels altimeter setting. For uncompensated Baro-VNAV systems, LNAV/VNAV NA below -16°C (3°F) or above 54°C (130°F). When local altimeter setting not received, use New Braunfels altimeter setting and increase all DA 43 feet and all MDA 60 feet; increase LPV and LNAV/VNAV all Cats, and LNAV Cat C/D/E visibility ½ mile and Circling Cat C/D visibility ¼ mile. Circling NA for Cat E SW of Rwy 13-31. DME/DME RNP-0.3 NA. VDP NA with New Braunfels altimeter setting. Helicopter visibility reduction below ¾ SM NA.

MISSED APPROACH:
Climb to 3000 direct
RAJRY and hold.

ATIS ★ 120.825	AUSTIN APP CON 119.0 370.85	SAN MARCOS TOWER ★ 126.825 (CTAF) L	GND CON 120.125	CLNC DEL 120.125	CLNC DEL 121.35 (when twr closed)
--------------------------	---------------------------------------	--	---------------------------	----------------------------	--



3000	RAJRY					QIMIB	6 NM Holding Pattern
							
*LNAV only.		TUROC 2.4 NM to RW26	NAKIC 2000	261°		081° →	3000
		*1.3 NM to RW26	*1400	2000	← 261°		GP 3.00° TCH 55
1.3 NM		1.1 NM	1.9 NM	7.2 NM			
CATEGORY	A	B	C	D	E		
LPV DA	837-¾ 250 (300-¾)						
LNAV/VNAV DA	866-⅞ 279 (300-⅞)						
LNAV MDA	1060-1	473 (500-1)	1060-1⅓		473 (500-1⅓)		
 CIRCLING	1080-1 485 (500-1)	1120-1 525 (600-1)	1240-1¾ 645 (700-1¾)	1320-2¼ 725 (800-2¼)	1340-2¾ 745 (800-2¾)		