

WAAS CH <b>77832</b> <b>W17A</b>	APP CRS <b>171°</b>	Rwy Idg TDZE <b>595</b> Apt Elev <b>595</b>
--	------------------------	---

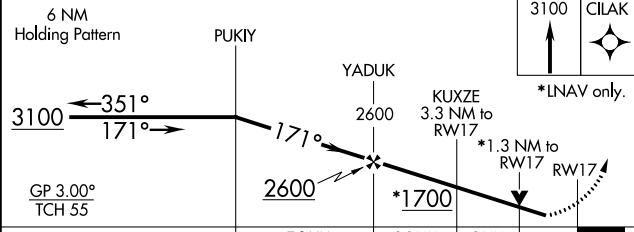
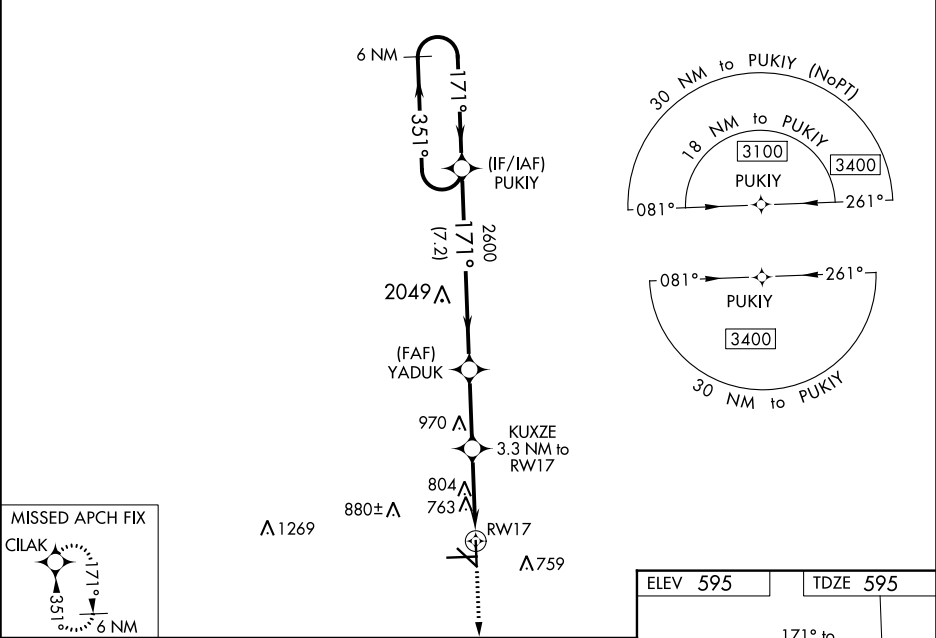
RNAV (GPS) RWY 17

SAN MARCOS RGNL (HYI)

**⚠** Baro-VNAV NA when using New Braunfels altimeter setting. For uncompensated Baro-VNAV systems, LNAV/VNAV NA below -16°C (3°F) or above 54°C (130°F). When local altimeter setting not received, use New Braunfels altimeter setting and increase all DA 43 feet and all MDA 60 feet; increase LPV all Cats and Circling Cat C/D visibility ¼ mile, increase LNAV/VNAV all Cats and LNAV Cats C/D/E visibility ⅓ mile. Circling NA for Cat E SW of Rwy 13-31. DME/DME RNP-0.3 NA. VDP NA with New Braunfels altimeter setting. Helicopter visibility reduction below ¾ SM NA.

**MISSED APPROACH:**  
Climb to 3100 direct CILAK and hold.

ATIS ★ <b>120.825</b>	AUSTIN APP CON <b>119.0 370.85</b>	SAN MARCOS TOWER ★ <b>126.825</b> (CTAF) <b>1</b>	GND CON <b>120.125</b>	CLNC DEL <b>120.125</b>	CLNC DEL <b>121.35</b> (when twr closed)
--------------------------	---------------------------------------	--	---------------------------	----------------------------	--



CATEGORY	A	B	C	D	E
LPV DA	960-1½		365 (400-1½)		
LNAV/VNAV DA	1052-1½		457 (500-1½)		
LNAV MDA	1060-1	465 (500-1)	1060-1¾ 465 (500-1¾)		
CIRCLING	1080-1 485 (500-1)	1120-1 525 (600-1)	1240-1¼ 645 (700-1¾)	1320-2¼ 725 (800-2¼)	1340-2¾ 745 (800-2¾)

