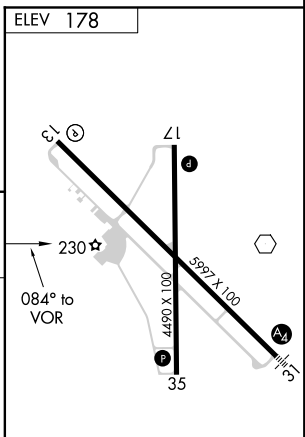


20198

VOR-A  
ALICE INTL (ALI)

**MISSED APPROACH:** Climb to 1 500 then climbing left turn to 2000 direct AU VOR and hold.

UNICOM  
123.0 (CTAF) **L**



REIL Rwy 13 **L**  
MIRL Rwy 13-31 and 17-35 **L**

ALICE INTL (ALI)  
VOR-A