
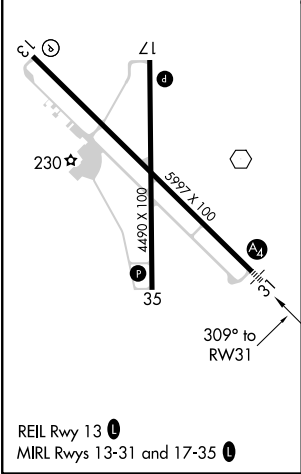
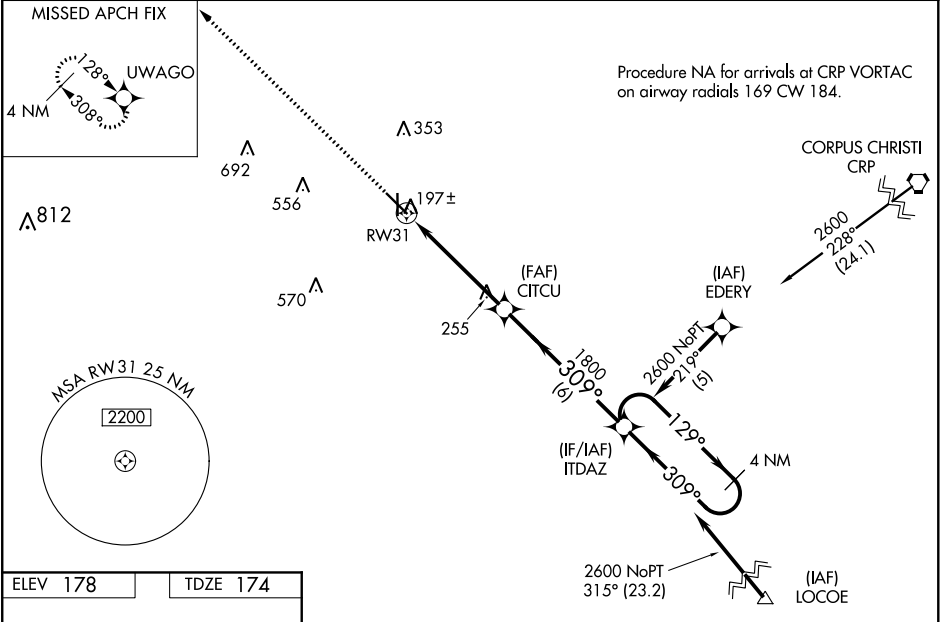


WAAS CH <b>81813</b> <b>W31A</b>	APP CRS <b>309°</b>	Rwy Idg TDZE Apt Elev	<b>5997</b> <b>174</b> <b>178</b>
--	------------------------	-----------------------------	---

RNAV (GPS) RWY 31  
ALICE INTL (ALI)

<p><b>▽</b> For uncompensated Baro-VNAV systems, LNAV/VNAV NA below -15°C (5°F) or above 48°C (118°F). DME/DME RNP-0.3 NA. Visibility reduction by helicopters NA. When local altimeter setting not received, use Nueces County altimeter setting: increase DA by 56 feet and visibility LNAV/VNAV all Cats to ¾ mile; increase all MDA 60 feet and LNAV visibility Cat C, D to 1 mile. For inop MALS, increase LPV all Cats visibility to ¾ mile. For inop MALS with Nueces County altimeter setting, increase LNAV/VNAV all Cats and LNAV Cats C, D visibility to 1 ¼ mile. VDP NA when using Nueces County altimeter setting.</p>	<p><b>MALS</b></p> <p></p>	<p><b>MISSED APPROACH:</b> Climb to 2100 direct UWAGO and hold.</p>
--	---	---

<p><b>ASOS</b> <b>119.225</b></p>	<p><b>KINGSVILLE APP CON *</b> <b>119.9 290.45</b></p>	<p><b>UNICOM</b> <b>123.0 (CTAF) 0</b></p>
---------------------------------------	--	--



<p><b>2100</b></p>	<p><b>UWAGO</b></p>	<p><b>ITDAZ</b></p>	<p><b>4 NM Holding Pattern</b></p>
<p><b>*LNAV only.</b></p>	<p><b>*1 NM to RWY 31</b></p>	<p><b>CITCU</b></p>	<p><b>1800</b></p>
<p><b>RWY 31</b></p>	<p><b>1800</b></p>	<p><b>309°</b></p>	<p><b>129°</b></p>
<p><b>1 NM</b></p>	<p><b>3.9 NM</b></p>	<p><b>6 NM</b></p>	<p><b>2600</b></p>
<p><b>GP 3.00°</b></p>	<p><b>TCH 47</b></p>		
<p><b>CATEGORY</b></p>	<p><b>A</b></p>	<p><b>B</b></p>	<p><b>C</b></p>
<p><b>LPV DA</b></p>	<p><b>437-¾</b></p>	<p><b>263 (300-¾)</b></p>	
<p><b>LNAV/VNAV DA</b></p>	<p><b>467-¾</b></p>	<p><b>293 (300-¾)</b></p>	
<p><b>LNAV MDA</b></p>	<p><b>520-¾</b></p>	<p><b>346 (400-¾)</b></p>	
<p><b>CIRCLING</b></p>	<p><b>600-1</b></p>	<p><b>640-1</b></p>	<p><b>660-1½</b></p>
	<p><b>422 (500-1)</b></p>	<p><b>462 (500-1)</b></p>	<p><b>482 (500-1½)</b></p>
			<p><b>740-2</b></p>
			<p><b>562 (600-2)</b></p>