

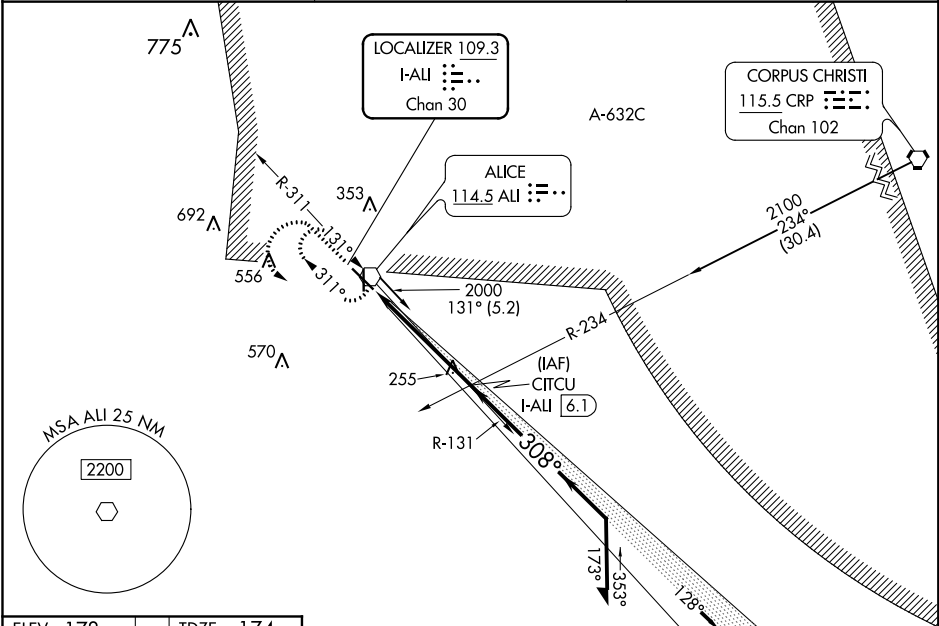
LOC/DME I-ALI	APP CRS	Rwy Idg	5997
109.3	308°	TDZE	174
Chan 30		Apt Elev	178

LOC/DME RWY 31
ALICE INTL (ALI)

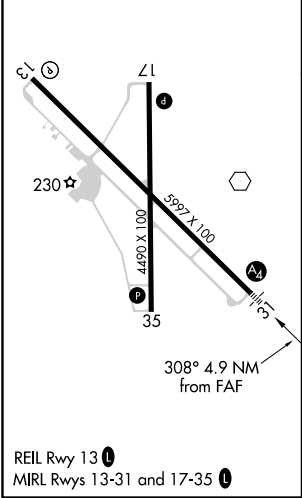
When local altimeter setting not received, use Nueces County altimeter setting: increase all MDAs 60 feet and visibility Cats C and D ¼ mile. VDP NA when using Nueces County altimeter setting. For inop MALS increase S-31 Cats C, D visibility to 1 mile. For inop MALS with Nueces County altimeter setting increase S-31 Cats C, D visibility to ½ mile.

MALS
MISSED APPROACH: Climb to 1500 then climbing left turn to 2000 direct ALI VOR and hold.

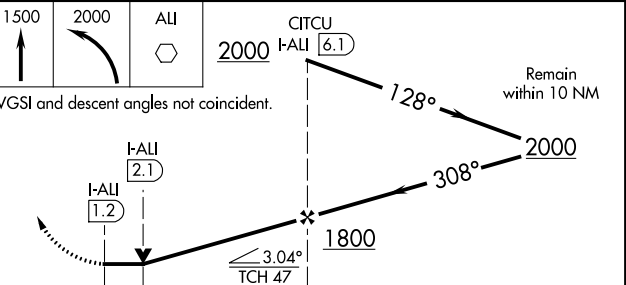
ASOS 119.225	KINGSVILLE APP CON ★ 119.9 290.45	UNICOM 123.0 (CTAF) 0
-----------------	--------------------------------------	--------------------------



ELEV 178	TDZE 174
----------	----------



RADAR required for procedure entry from Corpus Christi CRP VORTAC.



CATEGORY	A	B	C	D
S-31	520-¾ 346 (400-¾)			
CIRCLING	600-1 422 (500-1)	640-1 462 (500-1)	660-1½ 482 (500-1½)	740-2 562 (600-2)