

TACAN Y RWY 34

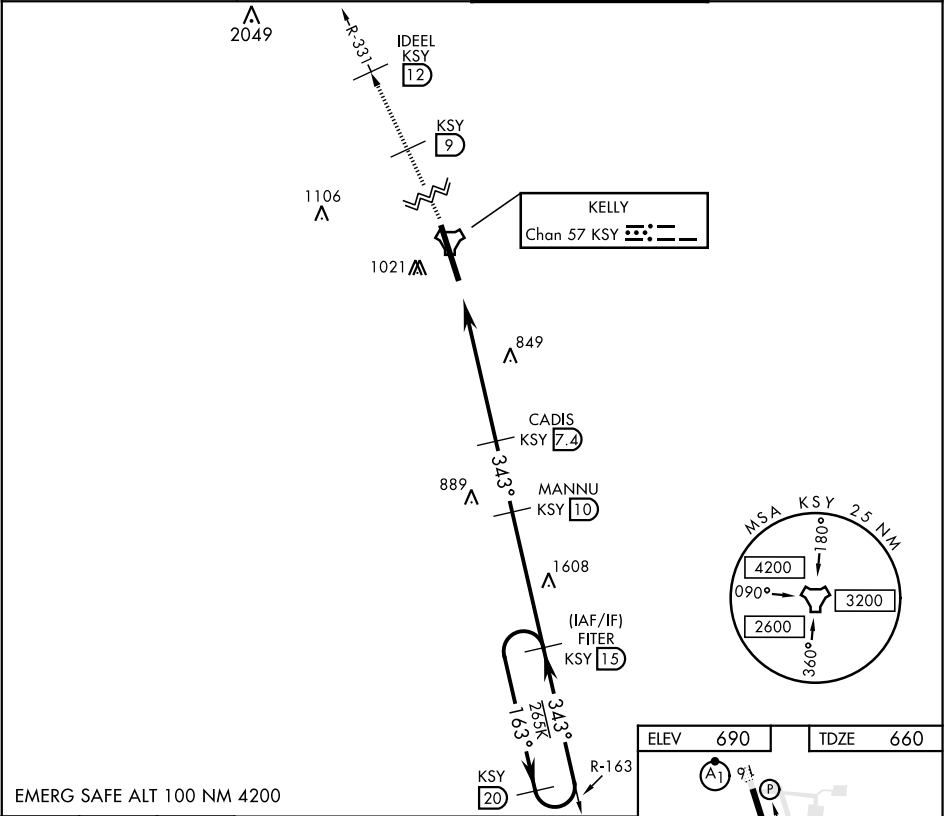
TACAN KSY Chan 57	APCH CRS 343°	Rwy ldg 11,550 TDZE 660 Arprt Elev 690
----------------------	------------------	--

AL-371 [USAF]

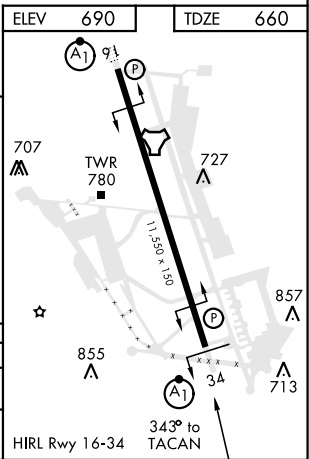
KELLY FLD (KSKF)

<p>▼ * When ALS inop, increase CAT AB RVR to 55 and vis to 1 mile, CAT CDE vis to 1 3/8 miles. ** Circling not authorized E of Rwy 16-34.</p>	<p>ALSF-1 (A1)</p>	<p>MISSED APPROACH: Climb to 2500 via KSY TACAN R-331 until 9 DME, cross 9 DME at 2500, then continue climb to 3100 to IDEEL/12 DME. Expect ATC instructions.</p>
---	------------------------	---

ATIS 120.45 273.5	SAN ANTONIO APP CON 118.05 353.5	KELLY TOWER 124.3 322.35	GND CON 121.8 289.4
----------------------	-------------------------------------	-----------------------------	------------------------



EMERG SAFE ALT 100 NM 4200					
2500 KSY R-331	KSY R-331 9	3100 IDEEL KSY 12	CADIS 7.4	MANNU 10	
TACAN					
FRSTY 1.9					
2.89° TCH 60					
5 NM 5.5 NM					
CATEGORY	A	B	C	D	E
S-34 *	1120/24	460 (500-½)	1120/45	460	(500-¾)
CIRCLING **	1220-1 530 (600-1)	1300-1 610 (700-1)	1360-1¼ 670 (700-1¾)	1440-2½ 750 (800-2½)	1900-3 1210 (1300-3)



TACAN Y RWY 34

SC-3, 03 DEC 2020 to 31 DEC 2020

SC-3, 03 DEC 2020 to 31 DEC 2020