

SAN ANTONIO, TEXAS

RNAV (GPS) RWY 34

APCH CRS 338°	Rwy Idg 11,550 TDZE 660 Arpt Elev 690
------------------	---

AL-371 (USAF)

KELLY FIELD (KSKF)

T * When ALS inop, increase CAT ABCDE vis to 1 1/2 miles
 ** When ALS inop, increase CAT AB RVR to 55, vis to 1 mile; CAT CDE vis to 1 1/4 miles.
 *** Circling NA E of Rwy 16-34.

ALSF-1

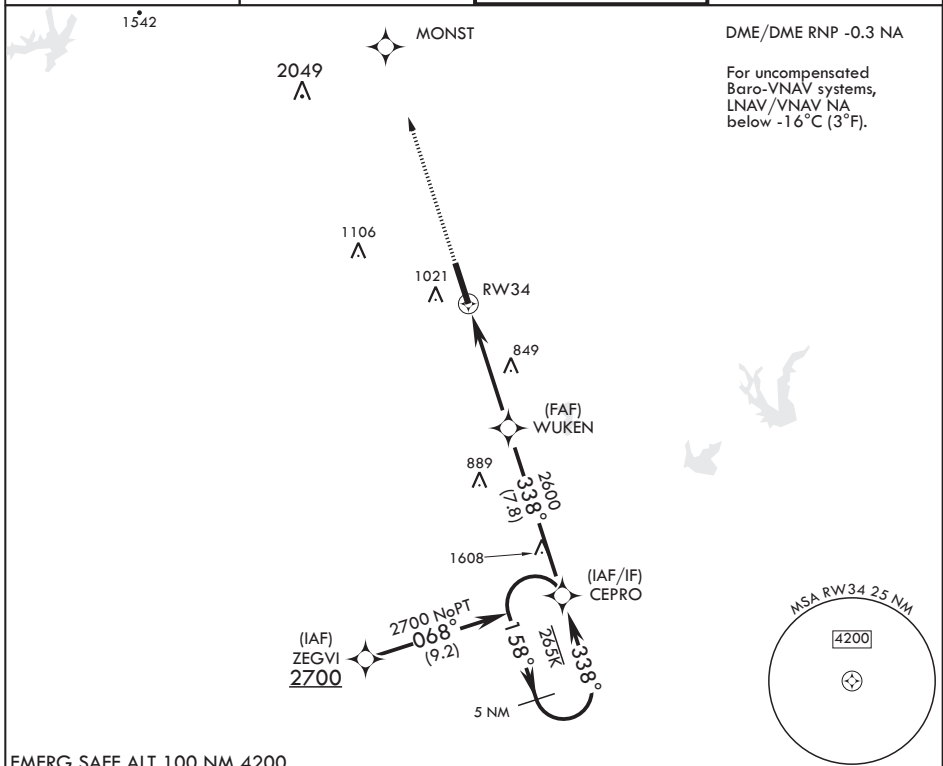
MISSED APPROACH: Climb to 3000
direct MONST. Expect ATC instructions.

ATIS
120.45 273.5

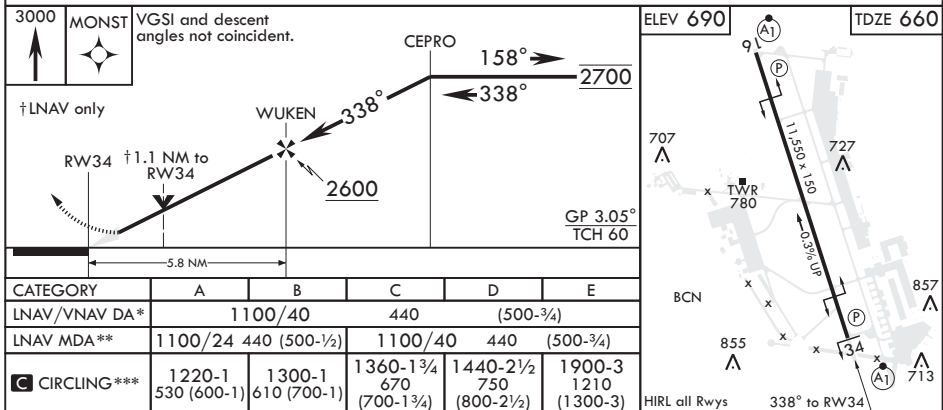
SAN ANTONIO APP CON
118.05 353.5

KELLY TOWER
124.3 322.35

GND CON
121.8 289.4



EMERG SAFE ALT 100 NM 4200



SAN ANTONIO, TEXAS

29°23'N - 98°35'W

KELLY FIELD (KSKF)

Amdt 1 10OCT19

RNAV (GPS) RWY 34

SC-3, 03 DEC 2020 to 31 DEC 2020

SC-3, 03 DEC 2020 to 31 DEC 2020