

ILS or LOC/DME Y RWY 34

LOC I-OSQ 110.7	APCH CRS 338°	Rwy ldg 11,550 TDZE 660 Arpt Elev 690
---------------------------	-------------------------	--

AL-371 [USAF]

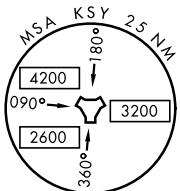
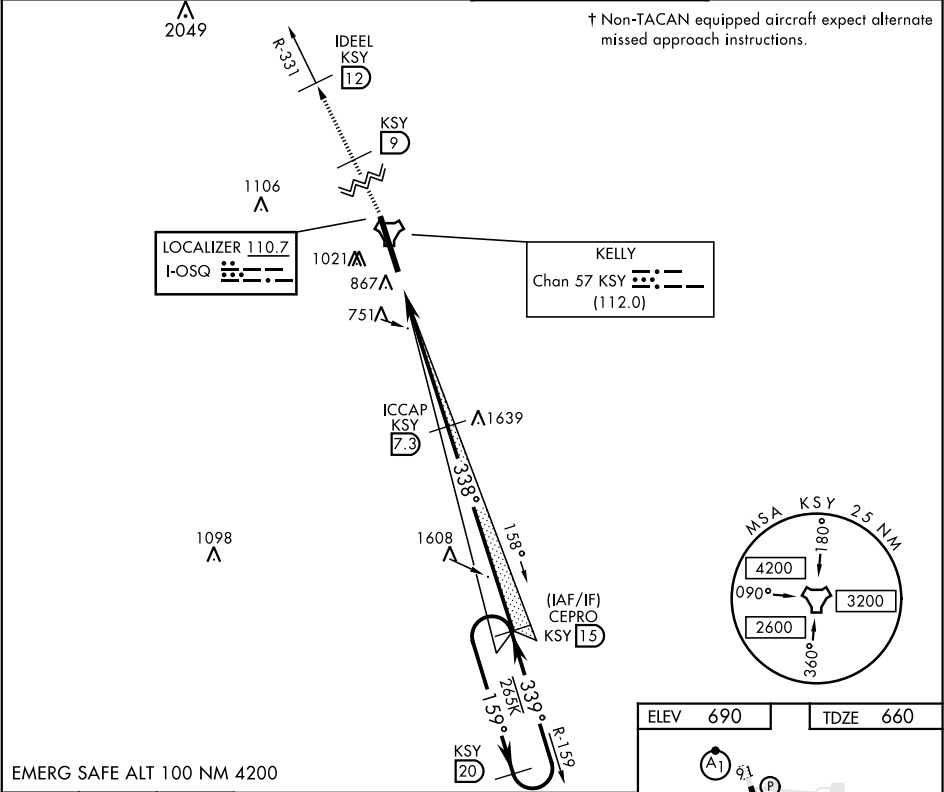
KELLY FLD (KSKF)

▼ ** When ALS inop, increase RVR to 40 and vis to ¼ mile.
** When ALS inop, increase RVR to 55 and vis to 1 mile.
*** Circling not authorized E of Rwy 16-34.

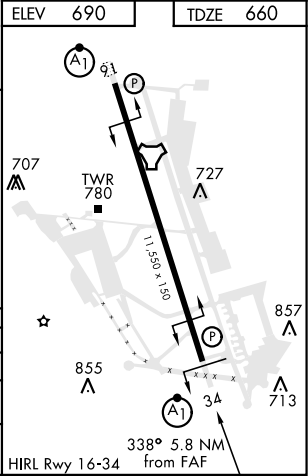


† MISSED APPROACH: Climb to 2500 via KSY
TACAN R-331 until 9 DME, cross 9 DME at 2500,
then continue climb to 3000 to IDEEL/12 DME.
Expect ATC instructions.

ATIS 120.45 273.5	SAN ANTONIO APP CON 118.05 353.5	KELLY TOWER 124.3 322.35	GND CON 121.8 289.4
-----------------------------	--	------------------------------------	-------------------------------



2500 KSY R-331	KSY R-331 9	3000 IDEEL KSY 12
TACAN		
JETKA 1.9		
ICCAP 7.3		
CEPRO 15		
2600		
338°		
339°		
2700		
GS 3.00°		
TCH 60'		
VGS1 and descent angles not coincident.		
2600		
5.5 NM		
5.4 NM		
EMERG SAFE ALT 100 NM 4200		
CATEGORY		
A		
B		
C		
D		
E		
S-ILS 34*		
860/24		
200		
(200-½)		
S-LOC/DME		
1040/24		
380		
(400-½)		
1040/35		
380		
(400-¾)		
CIRCLING***		
1220-1		
1300-1		
1360-1¾		
1440-2½		
1900-3		
530 (600-1)		
610 (700-1)		
670 (700-1¾)		
750 (800-2½)		
1210 (1300-3)		



ILS or LOC/DME Y RWY 34