

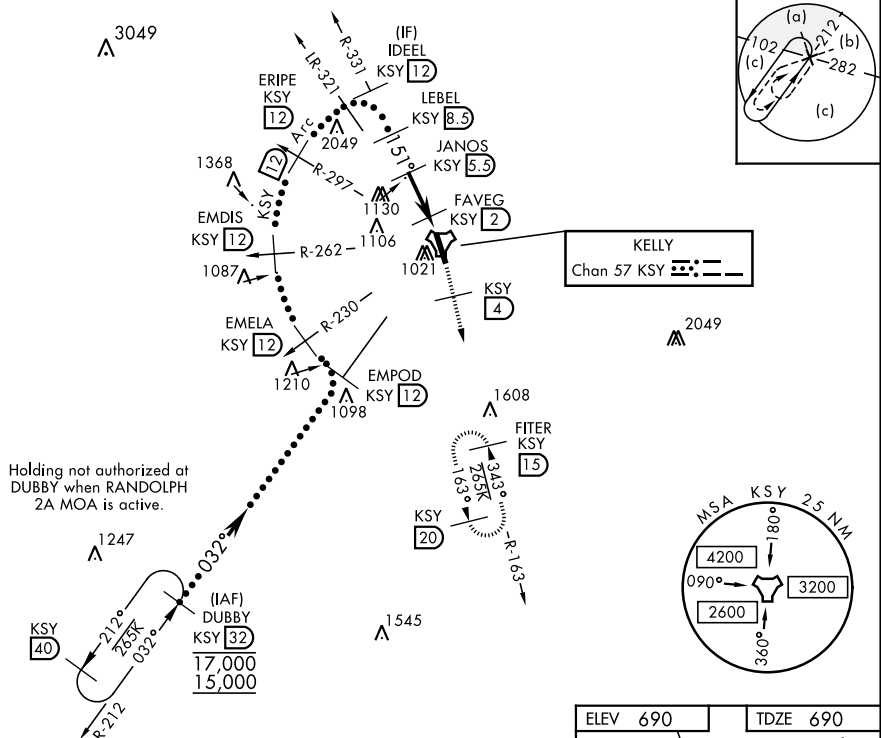
TACAN KSY Chan 57	APCH CRS 151°	Rwy Idg 11,550 TDZE 690 Arpt Elev 690
-----------------------------	-------------------------	--

KELLY FLD (KSKF)

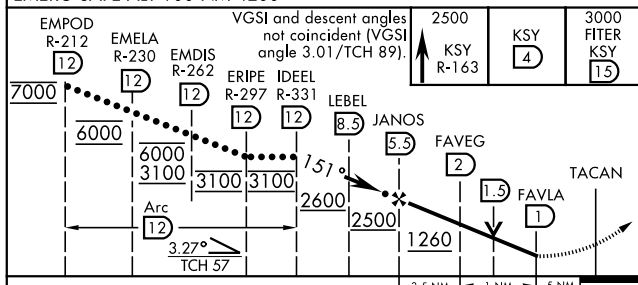
ALSF-1

MISSED APPROACH: Climb to 2500 via KSY TACAN R-163 until 4 DME, then continue climb to 3000 to FITER/15 DME and hold.

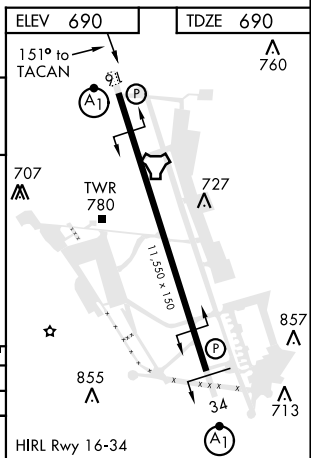
ATIS	SAN ANTONIO APP CON	KELLY TOWER	GND CON
120.45 273.5	118.05 353.5	124.3 322.35	121.8 289.4



EMERG SAFE ALT 100 NM 4200



CATEGORY	C	D	E
S-16*	1100-40	410	(500-3%)
C CIRCLING**	1360-1 $\frac{3}{4}$ 670 (700-1 $\frac{3}{4}$)	1440-2 $\frac{1}{2}$ 750 (800-2 $\frac{1}{2}$)	1900-3 1210 (1300-3)



HI-TACAN Z RWY 16