
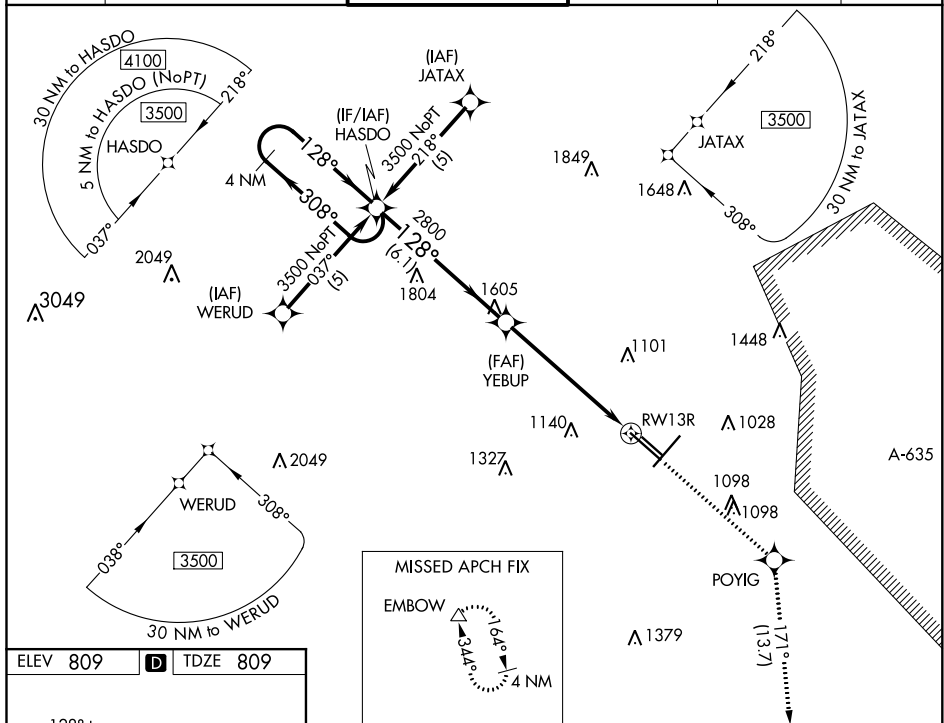


WAAS CH <b>82409</b> <b>W13A</b>	APP CRS <b>128°</b>	Rwy Idg <b>8502</b> TDZE <b>809</b> Apt Elev <b>809</b>
--	------------------------	---

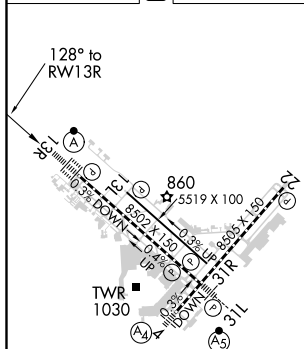
RNAV (GPS) Y RWY 13R  
SAN ANTONIO INTL (SAT)

- |  |  |   |
|--|--|---|
| <p><b>▼</b> For uncompensated Baro-VNAV systems, LNAV/VNAV NA below -2°C (29°F) or above 54°C (130°F). Circling NA west of Rwy 4 and 13R. DME/DME RNP-0.3 NA.</p> <p><b>▲</b> For inop ALS, increase LPV all Cats visibility to RVR 4500, LNAV/VNAV all Cats visibility to 1½ SM, and LNAV Cats C and D visibility to 2½ SM.</p> | <p>ALS-F-2</p>  | <p><b>MISSED APPROACH:</b> Climb to 3100 direct POYIG and track 171° to EMBOW and hold.</p> |
|--|--|---|

D-ATIS 118.9	SAN ANTONIO APP CON 125.1 307.0	SAN ANTONIO TOWER 119.8 257.8	GND CON 121.9 348.6	CLNC DEL 126.7	CPDLC
-----------------	------------------------------------	----------------------------------	------------------------	-------------------	-------



ELEV 809	<b>D</b>	TDZE 809
----------	----------	----------



4 NM Holding Pattern				HASDO	3100 ↑	POYIG ✦	tr 171° ↻	EMBOW △
<div>3500 ← 308° 128° →</div> <div>GP 3.00° TCH 58</div> <div>VGSi and RNAV glidepath not coincident (VGSi Angle 3.00/TCH 75).</div>				YEBUP 2800	*2.3 NM to RW13R		*LNAV only. RW13R	
				2800 ↗	6.1 NM		3.7 NM	2.3 NM
CATEGORY	A		B		C		D	
LPV DA			1107/24		298 (300-½)			
LNAV/ VNAV DA			1340-1⅜		531 (600-1⅜)			
LNAV MDA	1620/24 811 (900-½)	1620/40 811 (900-¾)	1620-1⅞		811 (900-1⅞)			
CIRCLING	1620-1¼	811 (900-1¼)	1620-2½ 811 (900-2½)		1620-2¾ 811 (900-2¾)			