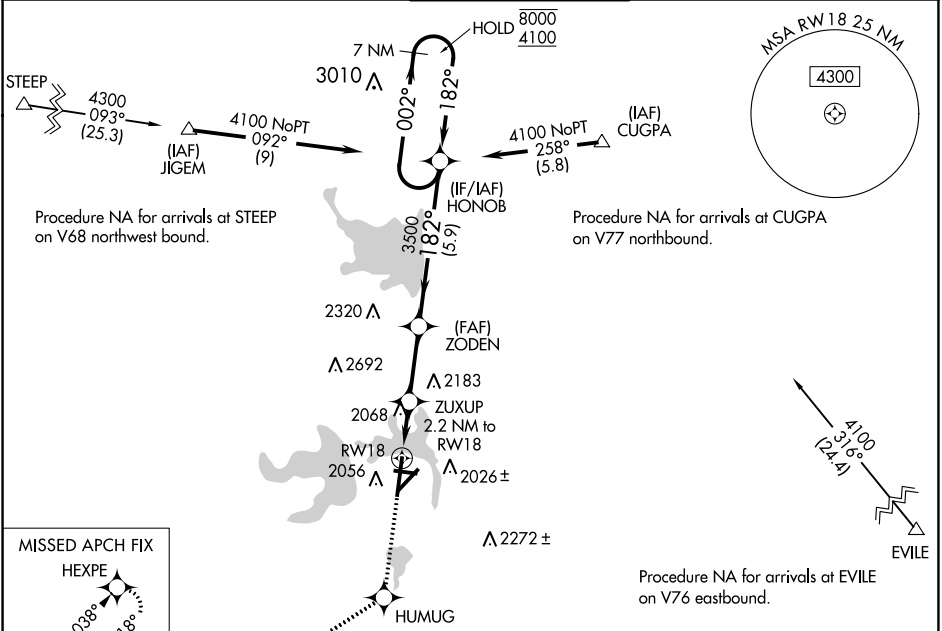


WAAS CH 93801 W18A	APP CRS 182°	Rwy Idg TDZE 1908 Apt Elev 1919
--	------------------------	---

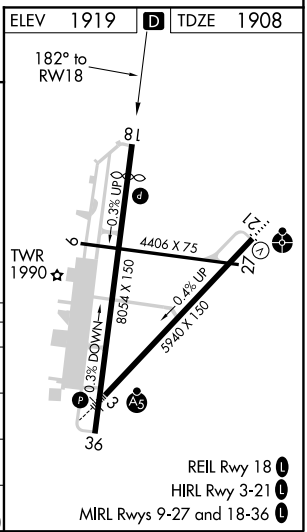
RNAV (GPS) RWY 18
SAN ANGELO RGNL/MATHIS FIELD (SJT)

RNP APCH: For uncompensated Baro-VNAV systems, LNAV/VNAV NA below -8°C or above 54°C. Circling NA for Cat E west of Rwy 18-36.	MISSED APPROACH: Climb to 4400 direct HUMUG and on track 232° to HEXPE and hold.
--	--

ATIS 128.45 319.0	SAN ANGELO APP CON ★ 125.35 354.1	MATHIS TOWER ★ 118.3 (CTAF) 284.7	GND CON 121.9 348.6	UNICOM 122.95
-----------------------------	---	---	-------------------------------	-------------------------



4400	HUMUG	tr 232°	HEXPE	7 NM	HONOB	Holding Pattern
*LNAV only	ZUXUP 2.2 NM to RW18	*1.2 NM to RW18	*2640	3500	182°	8000 4100
	1.2 NM	1 NM	2.7 NM	5.9 NM		GP 3.00° TCH 45
CATEGORY	A	B	C	D	E	
LPV DA		2158-3/4	250 (300-3/4)			
LNAV/VNAV DA		2246-1	338 (400-1)			
LNAV MDA	2320-1	412 (500-1)	2320-1 1/8	412 (500-1 1/8)		
CIRCLING	2360-1 441 (500-1)	2380-1 461 (500-1)	2500-1 1/2 581 (600-1 1/2)	2700-2 1/2 781 (800-2 1/2)	2700-2 3/4 781 (800-2 3/4)	



SC-3, 03 DEC 2020 to 31 DEC 2020

SC-3, 03 DEC 2020 to 31 DEC 2020