

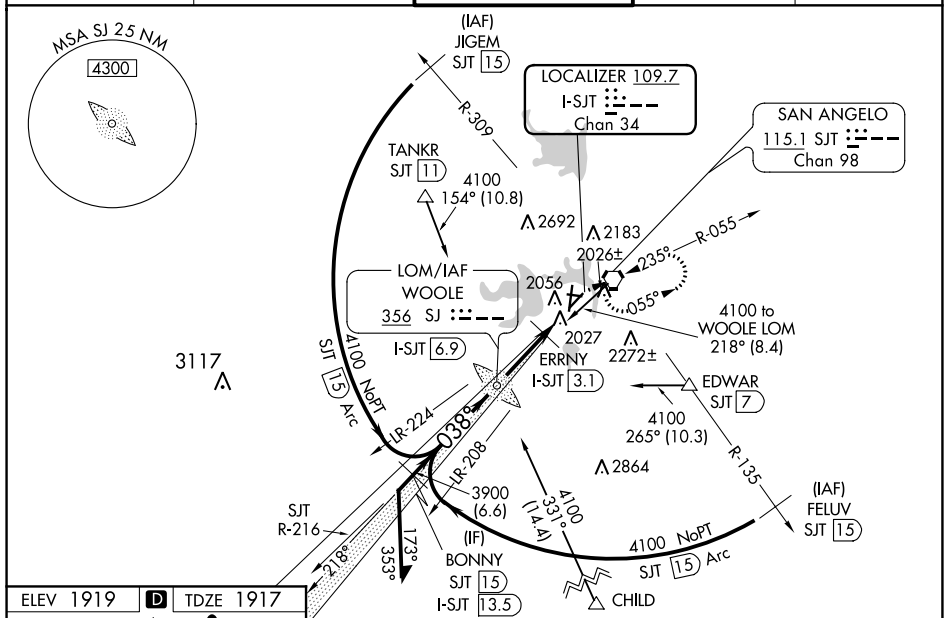
ILS Y or LOC Y RWY 3
SAN ANGELO RGNL/MATHIS FIELD(SJT)

T Autopilot coupled approach NA below 2685. For Inop ALS, increase S-ILS 3 Cat E visibility to RVR 4000, S-LOC 3 Cat C/D/E visibility to 2 SM. Circling NA for Cat E west of Rwy 18-36. ERRNY DME minimums: For Inop ALS, increase S-LOC 3 Cat C/D/E visibility to RVR 5500.

MALSR

MISSED APPROACH: Climb to 4000 then right turn direct SJT VORTAC and hold.

ATIS 128.45 319.0	SAN ANGELO APP CON ★ 125.35 354.1	MATHIS TOWER ★ 118.3(CTAF) 284.7	GND CON 121.9 348.6	UNICOM 122.95
----------------------	--------------------------------------	-------------------------------------	------------------------	------------------



FAF to MAP 5.7 NM					
Knots	60	90	120	150	180
Min:Sec	5:42	3:48	2:51	2:17	1:54

