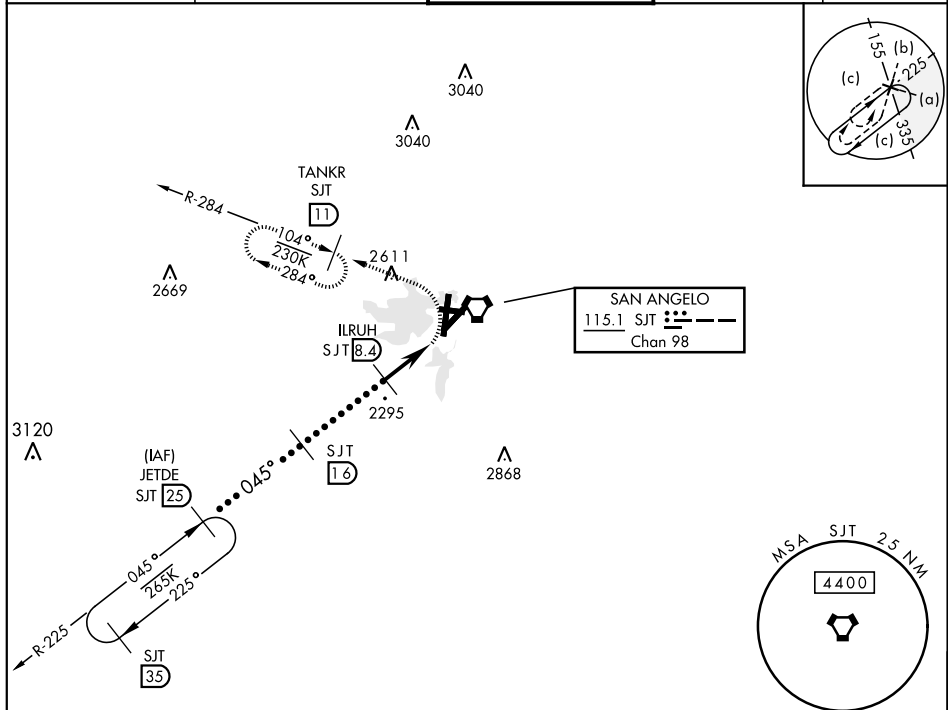


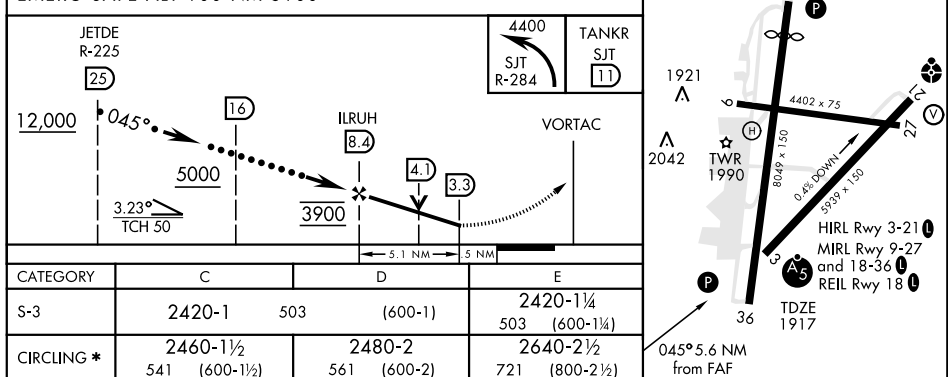
VORTAC SJT 115.1 Chan 98	APCH CRS 045°	Rwy Idg 5939 TDZE 1917 Arpt Elev 1919	JAL-367 [USAF] SAN ANGELO REGIONAL/MATHIS FIELD (KSJT)
--	-------------------------	--	---

<p>* CAT E Circling not authorized W of Rwy 18-36.</p>	<p>MALSR</p> 	<p>MISSED APPROACH: Climbing left turn to 4400 via SJT VORTAC R-284 to TANKR INT/11 DME and hold.</p>
--	--	---

ATIS 128.45 319.0	SAN ANGELO APP CON 125.35 354.1	MATHIS TOWER ★ 118.3 0 (CTAF) 284.7	GND CON 121.9 348.6	ASR
----------------------	------------------------------------	--	------------------------	-----



EMERG SAFE ALT 100 NM 5100



SAN ANGELO, TEXAS 31°22'N-100°30'W SAN ANGELO REGIONAL/MATHIS FIELD (KSJT)

Amdt 5A 24MAY18

HI-VOR/DME or TACAN RWY 3