


RNAV (GPS) RWY 15L

APCH CRS	Rwy Idg	8351
145°	TDZE	742
	Arpt Elev	761

AL-341 [USAF]

RANDOLPH AFB (KRND)

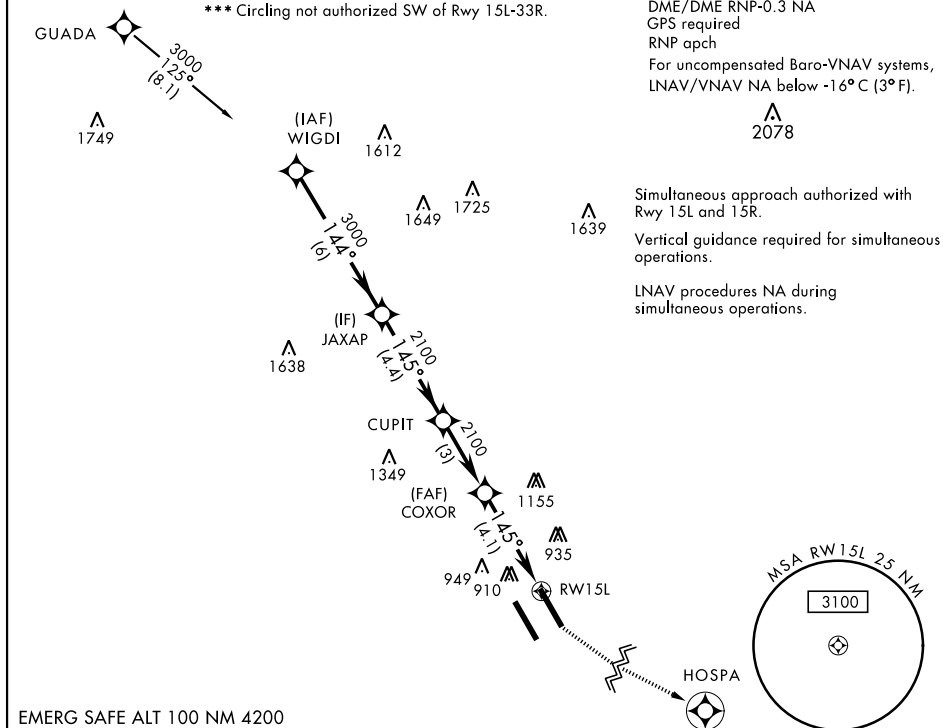
* When ALS inop, increase vis all CATs to 1½miles. ** When ALS inop, increase CAT AB RVR to 55 and vis to 1 mile, CAT CDE vis to 1½ miles.				ALSIF-1 	MISSED APPROACH: Climb to 1500, then climbing left turn to 3000 direct HOSPA. Expect ATC instructions.		
ATIS ★	SAN ANTONIO APP CON	RANDOLPH TOWER ★	RANDOLPH GND CON	CLNC DEL (RWY 15L-33R)	HANGOVER ATIS ★	HANGOVER TOWER ★	HANGOVER GND CON
290.525	128.05 318.1	128.25 294.7	119.65 275.8	338.35	327.8	120.5 291.1	124.75 353.75

*** Circling not authorized SW of Rwy 15L-33R.

DME/DME RNP-0.3 NA
GPS required
RNP apch
For uncompensated Baro-VNAV systems,
LNAV/VNAV NA below -16°C (3°F).

Simultaneous approach authorized with
Rwy 15L and 15R.
Vertical guidance required for simultaneous
operations.

LNAV procedures NA during
simultaneous operations.



EMERG SAFE ALT 100 NM 4200

<div>WIGDI</div> <div>JAXAP</div> <div>CUPIT</div> <div>COXOR</div> <div>RW15L</div> <div>HOSPA</div> <div>↑ LNAV only</div> <div>1500</div> <div>3000</div> <div><div>3000</div><div>144°</div><div>145°</div><div>GS 3.04°</div><div>TCH 46</div><div>6 NM</div><div>4.4 NM</div><div>3 NM</div><div>4.1 NM</div><div>↑ 1.4 NM to RW15L</div></div>						ELEV 761		TDZE 742	
<div>CATEGORY</div> <div>A</div> <div>B</div> <div>C</div> <div>D</div> <div>E</div>						<div>145° to RW15L</div> <div>15L</div> <div>856</div> <div>857</div> <div>911</div> <div>843</div> <div>TWR 835</div> <div>TWR 848</div> <div>860</div> <div>812</div> <div>33R</div> <div>33L</div>			
LNAV/VNAV DA *		1240-1½		498		(500-1½)			
LNAV MDA **		1220/40 478 (500-¾)		1220/60		478 (500-1½)			
CIRCLING ***		1220-1 459 (500-1)		1260-1½ 499 (500-1½)		1800-3 1039 (1100-3)		HIRL all Rwy ALS Rwy 15L nstd len 2100'	

UNIVERSAL CITY, TEXAS

29°32'N-98°17'W

RANDOLPH AFB (KRND)

Orig 11OCT18

RNAV (GPS) RWY 15L