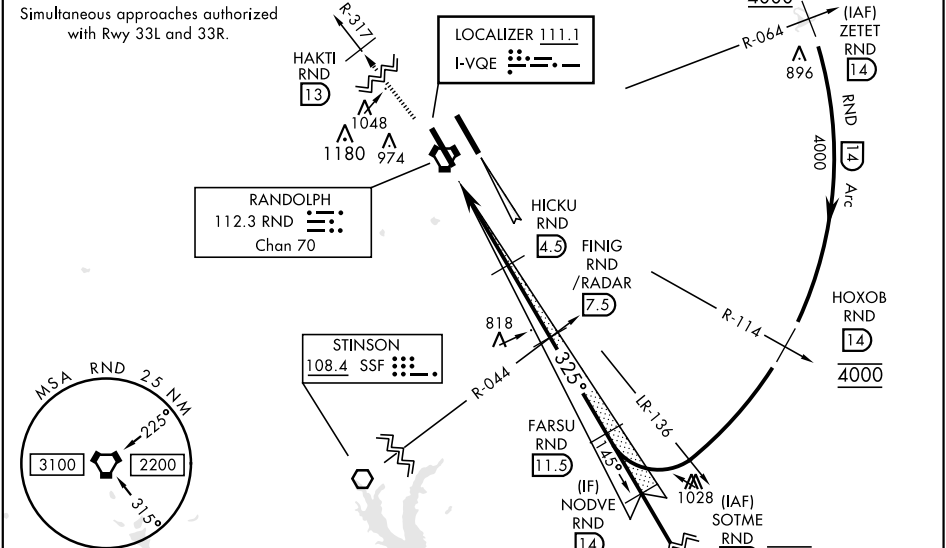


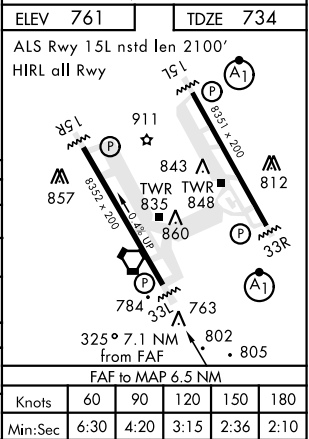
ILS or LOC RWY 33L

LOC I-VQE <u>111.1</u>		APCH CRS 325°		Rwy Idg 8352 TDZE 734 Arpt Elev 761		AL-341 [USAF]		RANDOLPH AFB (KRND)							
* Circling not authorized NE of Rwy 15R-33L.						MISSED APPROACH: Climb to 3000 out RND VORTAC R-317 to 13 DME (HAKTI). Expect ATC instructions.									
ATIS ★		SAN ANTONIO APP CON		RANDOLPH TOWER ★		RANDOLPH GND CON		CLNC DEL (RWY 15L-33R)		HANGOVER ATIS ★		HANGOVER TOWER ★		HANGOVER GND CON	
290.525		128.05 318.1		128.25 294.7		119.65 275.8		338.35		327.8		120.5 291.1		124.75 353.75	



RADAR or DME REQUIRED
EMERG SAFE ALT 100 NM 4200

3000 RND R-317	HAKTI RND 13	† LOC only	FINIG /RADAR 7.5	FARSU R-145 11.5	NODVE R-145 14
VORTAC	WAPOP 1	† HICKU 4.5	3100	325°	325°
		† 2100	3100	4000	4000
	0.6 NM	3.5 NM	3 NM		
CATEGORY	A	B	C	D	E
S-ILS 33L	934/40		200	(200-¾)	
S-LOC 33L	1060/55	326 (300-1)	1060/50	326	(300-1)
CIRCLING*	1220-1 459 (500-1)	1280-1 519 (600-1)	1500-2 739 (800-2)	1800-3	1039 (1100-3)
WITHOUT LAST STEP DOWN FIX					
S-LOC 33L	1120/55	386 (400-1)	1120/60	386	(400-1½)
CIRCLING*	1220-1 459 (500-1)	1280-1 519 (600-1)	1500-2 739 (800-2)	1800-3	1039 (1100-3)



ILS or LOC RWY 33L

SC-3, 03 DEC 2020 to 31 DEC 2020

SC-3, 03 DEC 2020 to 31 DEC 2020