

LOC I-JUNY <b><u>111.3</u></b>	APCH CRS <b>145°</b>	Rwy Idg <b>8352</b> TDZE <b>761</b> Arpt Elev <b>761</b>
-----------------------------------	-------------------------	--

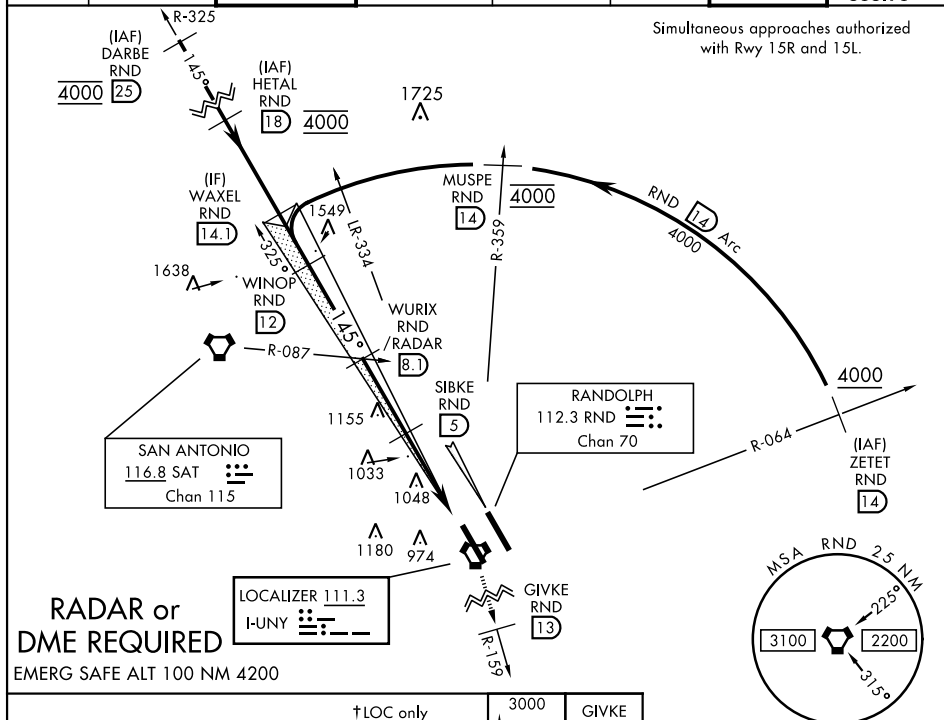
AL-341 [USAF]

RANDOLPH AFB (KRND)

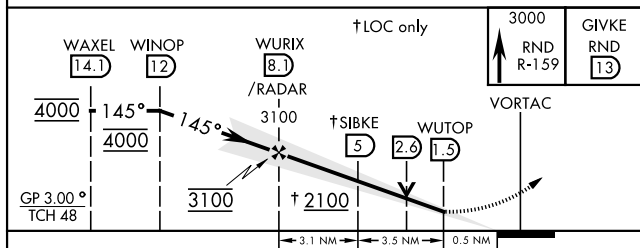
\*Circling not authorized NE of Rwy 15R-33L.

**MISSED APPROACH:** Climb to 3000 out RND VORTAC R-159 to 13 DME (GIVKE). Expect ATC instructions.

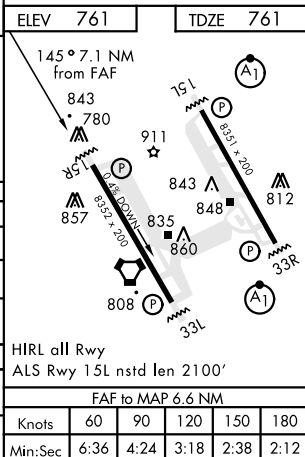
ATIS ★	SAN ANTONIO APP CON	RANDOLPH TOWER ★	RANDOLPH GND CON	CLNC DEL (RWY 15L-33R)	HANGOVER ATIS ★	HANGOVER TOWER ★	HANGOVER GND CON
290.525	128.05 318.1	128.25 294.7	119.65 275.8	338.35	327.8	120.5 291.1	124.75 353.75

RADAR or  
DME REQUIRED

EMERG SAFE ALT 100 NM 4200



CATEGORY	A	B	C	D	E
S-ILS 15R	961/40		200	(200-34)	
S-LOC 15R	1300/55	539 (600-1)	1300-1½	539	(600-1½)
<b>C</b> CIRCLING*	1300-1	539 (600-1)	1500-2 739 (800-2)	1800-3	1039 (1100-3)
WITHOUT LAST STEP DOWN FIX					
S-LOC 15R	1440/55	679 (700-1)	1440-17½	679	(700-17½)
<b>C</b> CIRCLING*	1440-1	679 (700-1)	1500-2 739 (800-2)	1800-3	1039 (1100-3)



UNIVERSAL CITY, TEXAS

29°32'N-98°17'W

RANDOLPH AFB (KRND)

## ILS or LOC RWY 15R

SC-3, 03 DEC 2020 to 31 DEC 2020

SC-3, 03 DEC 2020 to 31 DEC 2020