

TACAN Chan 36	APCH CRS 326°	Rwy ldg THRE Arpt Elev N/A N/A 761
-------------------------	-------------------------	--

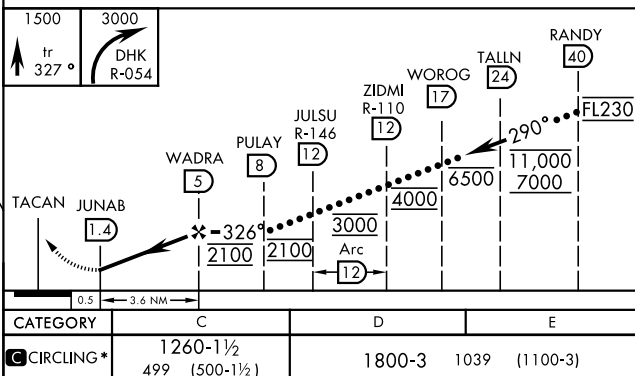
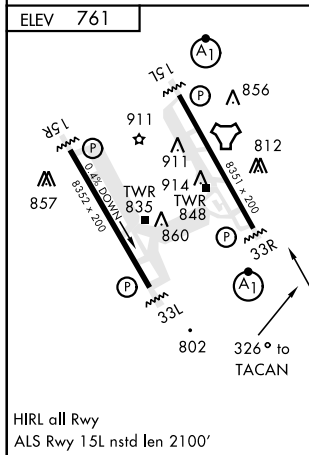
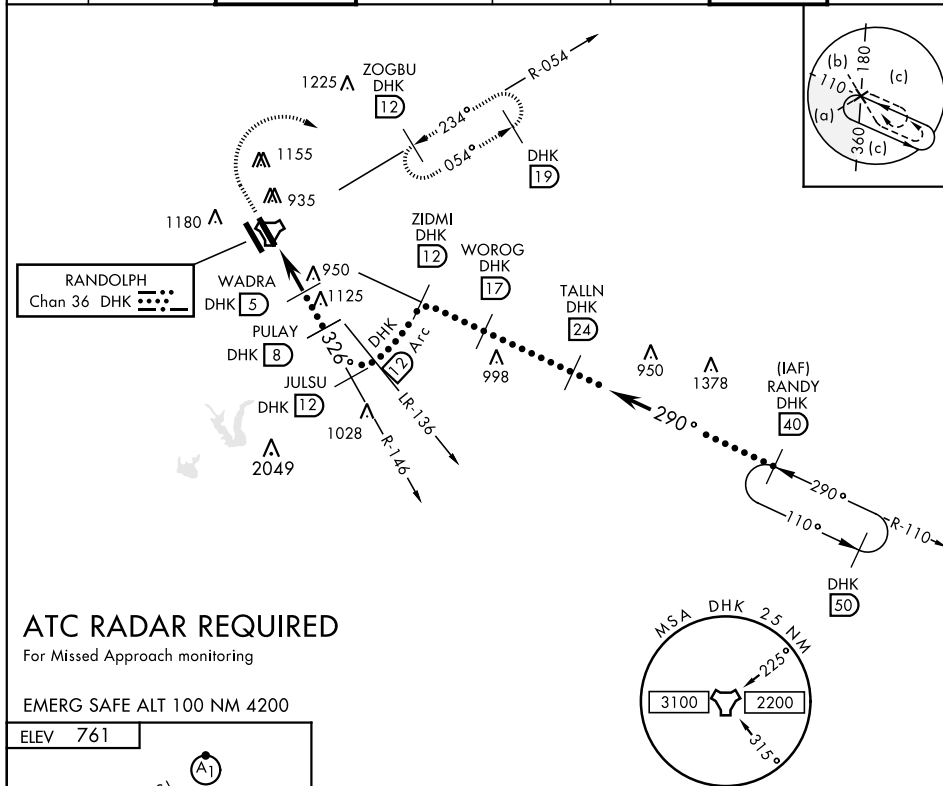
JAL-341 [USAF]

RANDOLPH AFB (KRND)

* Circling not authorized SW of Rwy 15L-33R.

MISSED APPROACH: Track 327° to 1500, then climbing right turn to 3000, intercept DHK TACAN R-054 direct ZOGBU and hold.

ATIS ★ 290.525	SAN ANTONIO APP CON 128.05 318.1	RANDOLPH TOWER ★ 128.25 294.7	RANDOLPH GND CON 119.65 275.8	CLNC DEL (RWY 15L-33R) 338.35	HANGOVER ATIS ★ 327.8	HANGOVER TOWER ★ 120.5 291.1	HANGOVER GND CON 124.75 353.75
--------------------------	---	--	--	--	------------------------------------	---	---



CATEGORY	C	D	E
CIRCLING*	1260-1½ 499 (500-1½)	1800-3	1039 (1100-3)