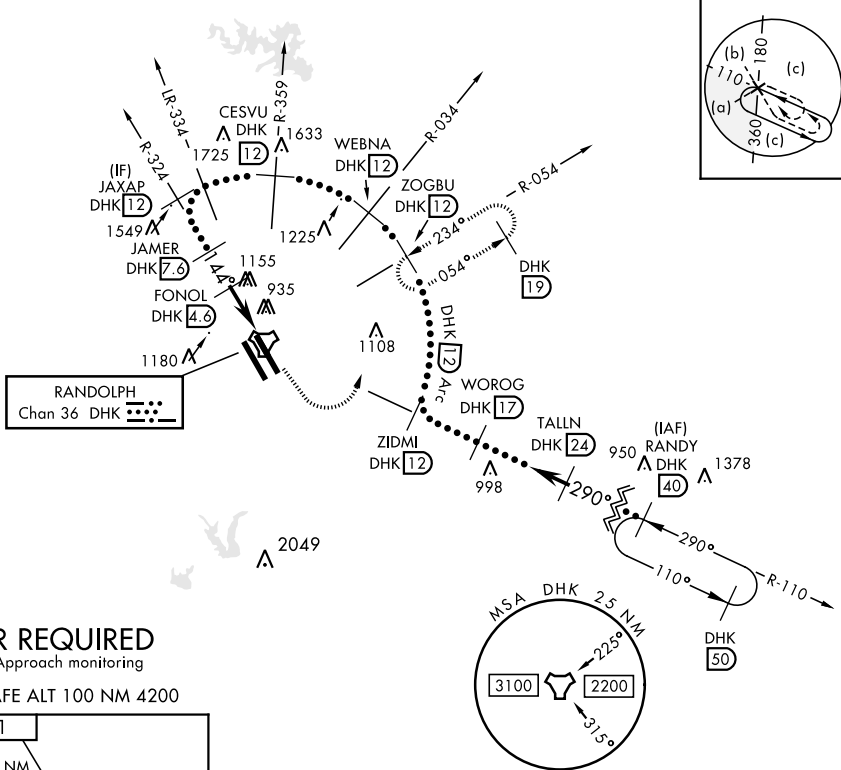


RANDOLPH AFB (KRND)

MISSED APPROACH: Track 145 ° to 1500. Then climbing left turn to 3000. Intercept DHK TACAN R-054 direct ZOGBU and hold as published.

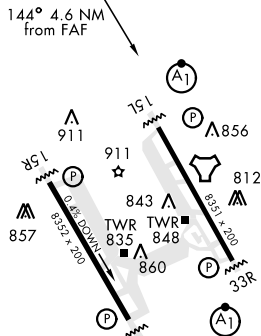
HANGOVER
GND CON
124.75
353.75



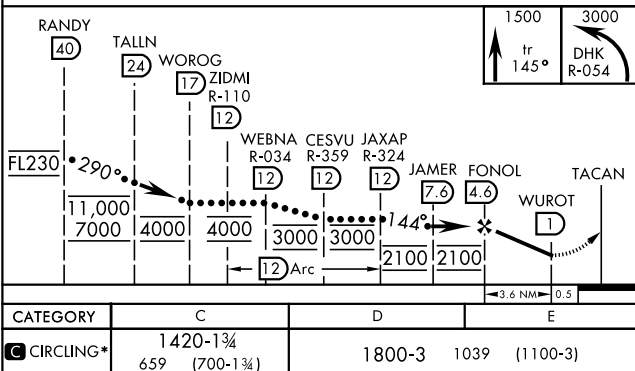
For Missed Approach monitoring

EMERG SAFE ALT 100 NM 4200

ELEV 761



HIRL all Rwy
ALS Rwy 15L nstd len 2100'



29°32'N-98°17'W

RANDOLPH AFB (KRND)

HI-TACAN A

SC-3, 03 DEC 2020 to 31 DEC 2020