

## HI-ILS or LOC RWY 15L

LOC I-TRT <b>109.9</b>	APCH CRS <b>145°</b>	Rwy ldg TDZE Arpt Elev <b>8351</b> <b>742</b> <b>761</b>
---------------------------	-------------------------	---

JAL-341 [USAF]

RANDOLPH AFB (KRND)

\* When ALS inop, increase CAT CDE vis to 1 3/4 miles.

\*\* Circling not authorized SW of Rwy 15L-33R.

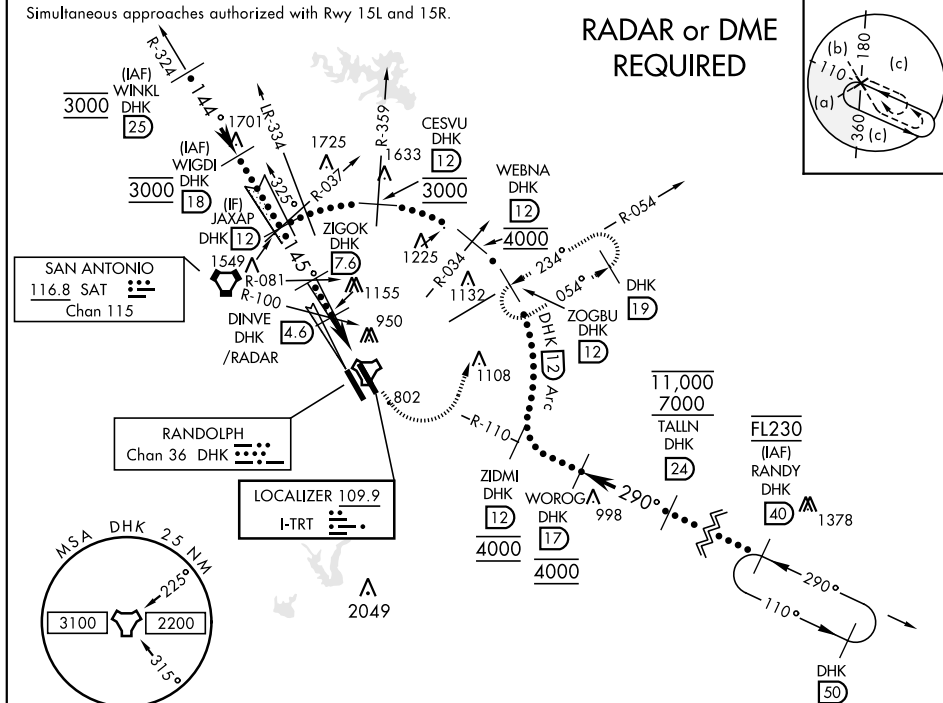
ALSIF-1



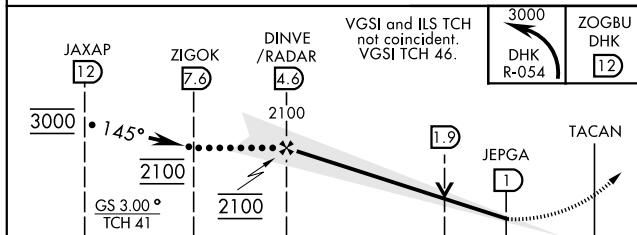
MISSED APPROACH: Climbing left turn to 3000, intercept DHK TACAN R-054 to ZOGBU and hold.

ATIS ★	SAN ANTONIO APP CON	RANDOLPH TOWER ★	RANDOLPH GND CON	CLNC DEL (RWY 15L-33R)	HANGOVER ATIS ★	HANGOVER TOWER ★	HANGOVER GND CON
290.525	128.05 318.1	128.25 294.7	119.65 275.8	338.35	327.8	120.5 291.1	124.75 353.75

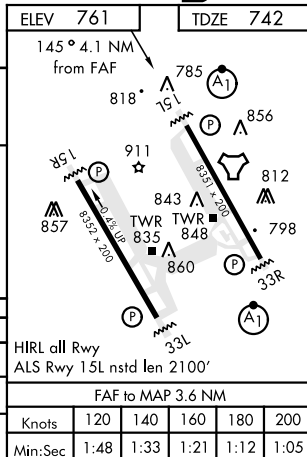
Simultaneous approaches authorized with Rwy 15L and 15R.

RADAR or DME  
REQUIRED

EMERG SAFE ALT 100 NM 4200



CATEGORY	C	D	E
S-ILS 15L	942/40	200	(200-3/4)
S-LOC 15L *	1220/60	478	(500-1 1/2)
CIRCLING **	1260-1 1/2 499 (500-1 1/2)	1800-3	1039 (1100-3)



## HI-ILS or LOC RWY 15L