

## HI-VOR or TACAN RWY 16R

\* Circling Rwy 16L NA at night.

**MISSED APPROACH:** Climb to 3500 then climbing left turn to 4800 on MAF VORTAC R-117 to DERIC/MAF 19 DME and hold.

ATIS ★  
126.8 235.975

MIDLAND APP CON  
124.6 290.4

MIDLAND TOWER ★  
118.7(CTAF) **L** 273.4

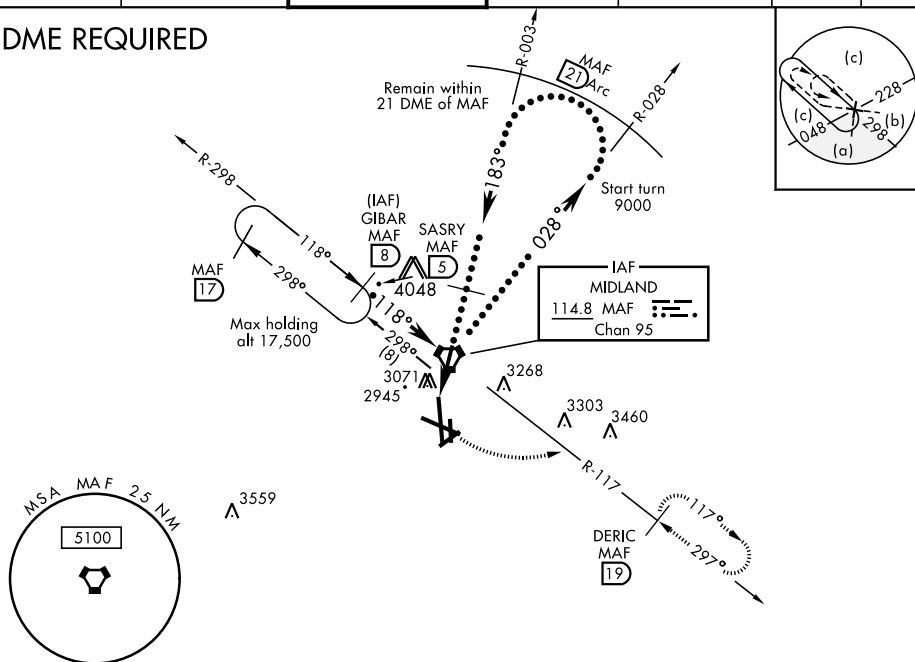
GND CON	
121.9	348.6

CLNC DEL  
**118.05 317.65**

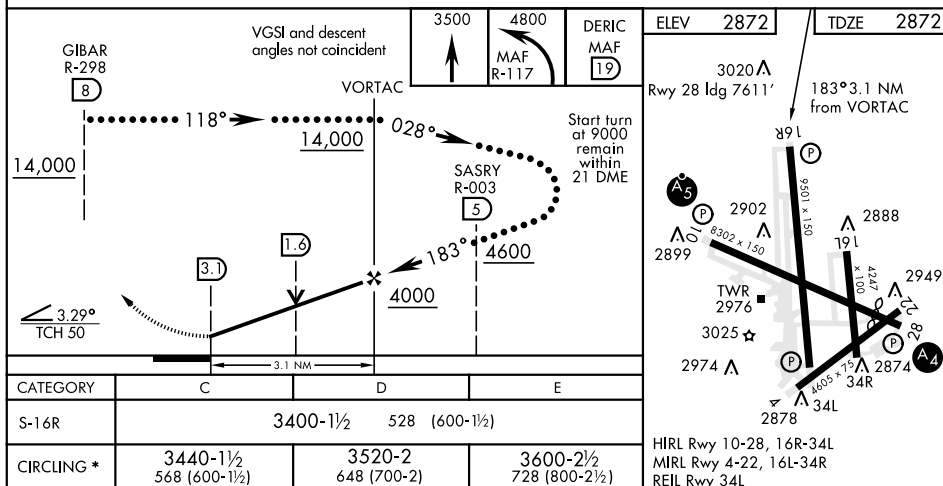
UNICOM  
122.95

ASR

## DME REQUIRED



EMERG SAFE ALT 100 NM 7000



MIDLAND, TEXAS

31°57'N-102°12'W

MIDLAND INTL AIR AND SPACE PORT (KMAF)

Amdt 3 20JUL17

## HI-VOR or TACAN RWY 16R