

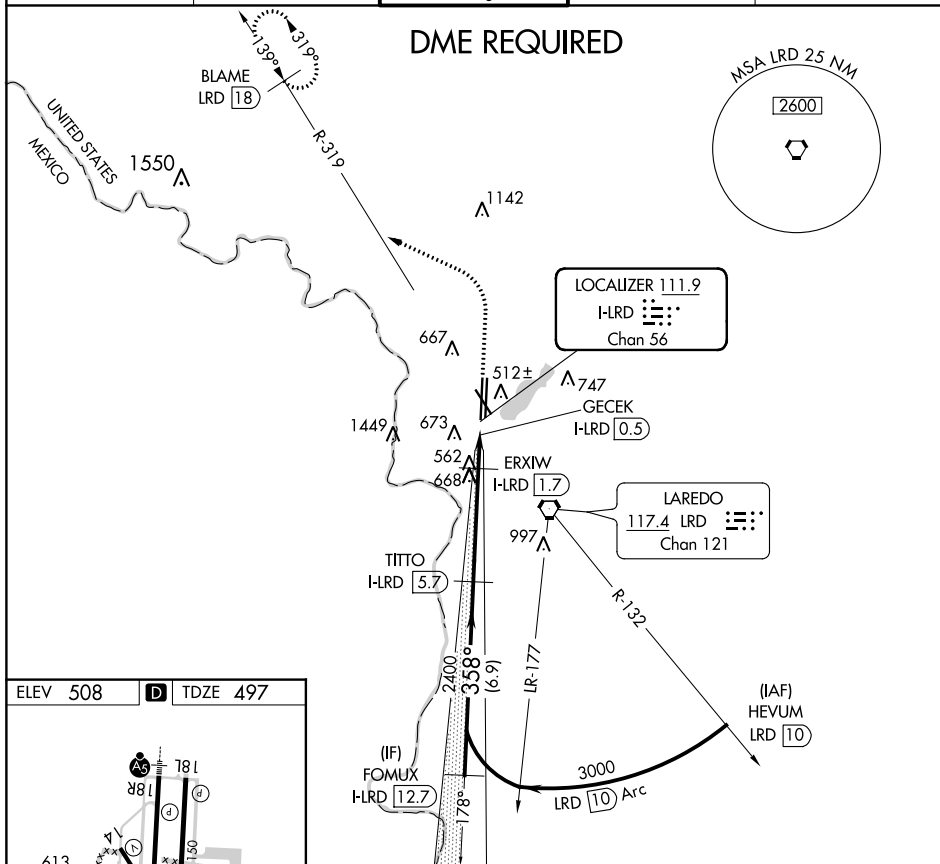
LOC/DME I-LRD 111.9 Chan 56	APP CRS 358°	Rwy Idg 8623 TDZE 497 Apt Elev 508
--	------------------------	---

LOC BC RWY 36L
LAREDO INTL (LRD)

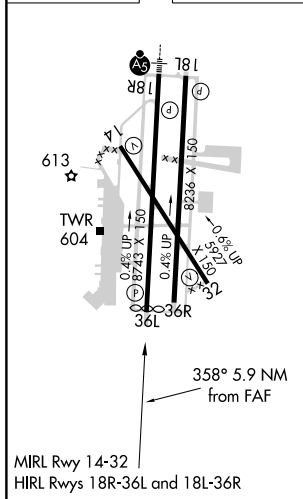
- T** Circling NA west of Rwy 14 and 36L.
A DME required.

MISSED APPROACH: Climb to 1100 then climbing left turn to 2600 on heading 290° and on LRD VORTAC R-319 to BLAME/LRD 18 DME and hold.

ATIS 125.775	HOUSTON CENTER 127.8 307.2	LAREDO TOWER ★ 120.1(CTAF) 257.9	GND CON 121.8	UNICOM 122.95
-----------------	-------------------------------	-------------------------------------	------------------	------------------



ELEV 508	D	TDZE 497
----------	----------	----------



FOMUX I-IRD 12.7		Use I-IRD DME when on the localizer course.		<div>1100 ↑ hdg 290°</div>		<div>2600 ↘ LRD R-319</div>		<div>BLAME LRD 18</div>	
3000		358°		TITTO I-IRD 5.7		ERXIW I-IRD 1.7		GECEK I-IRD 0.5	
Disregard glide slope indications.		2400		3.00° TCH 50		1100			
6.9 NM		4.1 NM		1.2 NM		0.6			
CATEGORY	A		B		C		D		E
S-LOC 36L					820-1 323 (400-1)				
C CIRCLING	940-1 432 (500-1)		980-1 472 (500-1)		1100-1½ 592 (600-1½)		1200-2¼ 692 (700-2¼)		1200-2½ 692 (700-2½)