

WAAS CH <b>69629</b> <b>W32A</b>	APP CRS <b>317°</b>	Rwy Idg <b>6236</b> TDZE <b>2605</b> Apt Elev <b>2613</b>
--	------------------------	---

RNAV (GPS) RWY 32  
PECOS MUNI (PEQ)

**▲** For uncompensated Baro-VNAV systems, procedure NA below -20°C (-4°F) or above 27°C (80°F).  
**▲** DME/DME RNP-0.3 NA. When local altimeter setting not received, use Wink altimeter setting: increase LPV DA to 2900 feet, LNAV/VNAV DA to 2950 feet and all visibilities ½ SM; increase all MDA 100 feet and visibility Cat C and LNAV Cat D ½ SM. Baro-VNAV NA when using Wink altimeter setting.  
 Circling Rwy 9, 27 NA at night.

**MISSED APPROACH:**  
Climb to 4600 direct  
WALOM and hold.

AWOS-3 <b>118.175</b>	ALBUQUERQUE CENTER <b>135.875 292.15</b>	UNICOM <b>122.8</b> (CTAF) <b>1</b>
--------------------------	---	--

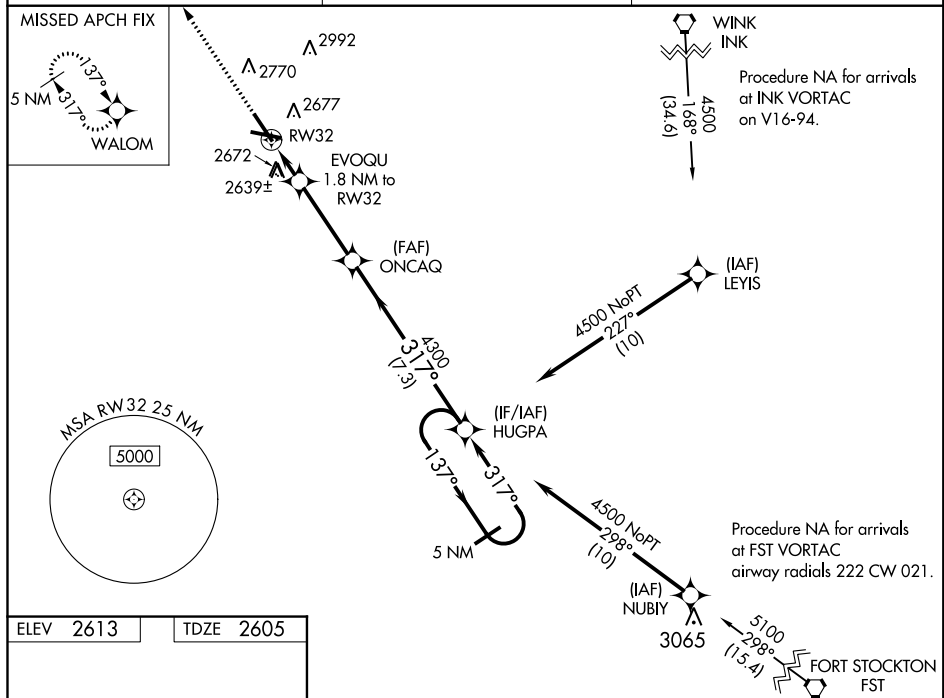


Diagram illustrating a 5 NM Holding Pattern for RW32. The pattern is defined by a series of turns: 137° right, 317° left, 137° right, and 317° left. The pattern is centered on the RW32 runway. The distance from the runway to the start of the pattern is 1.8 NM. The distance between the start of the pattern and the 317° turn is 3.4 NM. The distance between the 317° turn and the 137° turn is 7.3 NM. The pattern is labeled '5 NM Holding Pattern'. The diagram also shows the runway (RW32) and the holding pattern (HUGPA). The diagram includes a scale bar for 1.8 NM, 3.4 NM, and 7.3 NM. The diagram also includes a scale bar for 1.8 NM, 3.4 NM, and 7.3 NM. The diagram also includes a scale bar for 1.8 NM, 3.4 NM, and 7.3 NM.