

VOR RWY 26L
EL PASO INTL (ELP)

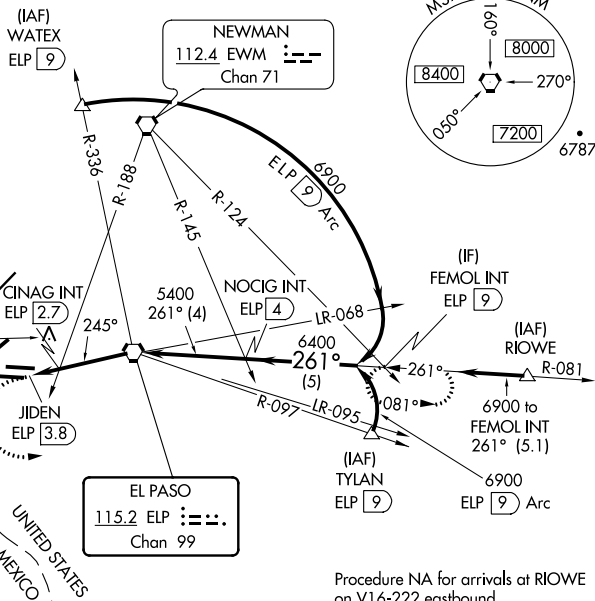


Circling NA for Cat D and E west of Rwy 4-22.



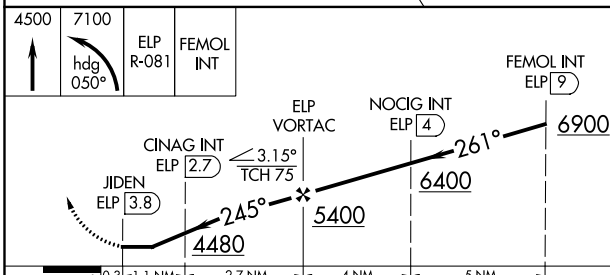
MISSED APPROACH: Climb to 4500 then climbing left turn to 7100 on heading 050° and on ELP VORTAC R-081 to FEMOL INT/9 DME and hold.

Procedure NA for arrivals at WATEX
on V94-611 northwest bound.

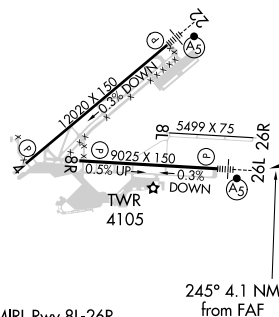


Procedure NA for arrivals at RIOWE
on V16-222 eastbound.

ELEV 3962		TDZE 3962
-----------	---	-----------



CATEGORY	A	B	C	D	E
S-26L	4480-1 518 (600-1)	4480-1 ³ / ₈ 518 (600-1 ³ / ₈)			
CIRCLING	4480-1 518 (600-1)	4480-1 ¹ / ₂ 518 (600-1 ¹ / ₂)	4680-2 718 (800-2)	4700-2 ¹ / ₂ 738 (800-2 ¹ / ₂)	
CINAG FIX MINIMUMS (DUAL VOR RECEIVERS OR DME REQUIRED)					
S-26L	4340-1 378 (400-1)				
CIRCLING	4420-1 458 (500-1)	4440-1 478 (500-1)	4460-1 ¹ / ₂ 498 (500-1 ¹ / ₂)	4680-2 ¹ / ₄ 718 (800-2 ¹ / ₄)	4700-2 ¹ / ₂ 738 (800-2 ¹ / ₂)



MIRL Rwy 8L-26R
REIL Rwy 4 and 8R
HIRL Rwy 4-22 and 8R-26L

FAF to MAP 3.8 NM					
Knots	60	90	120	150	180
Min:Sec	3:48	2:32	1:54	1:31	1:16