

APP CRS
265°

Rwy Idg
TDZE
Apt Elev

9025
3962
3962

RNAV (RNP) Z RWY 26L

EL PASO INTL (ELP)

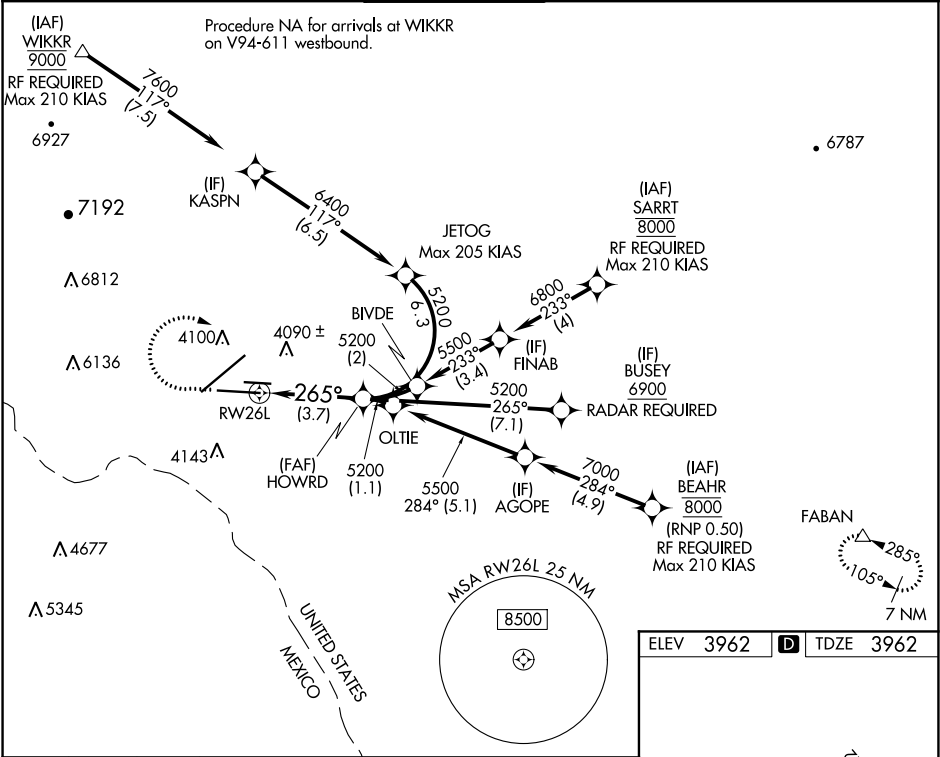
ASR

For uncompensated Baro-VNAV systems, procedure NA below -8°C (18°F) or above 50°C (122°F). For inop MALS, increase RNP 0.30 visibility all Cats to 1 mile. GPS Required.

MALS

MISSED APPROACH: Climb to 4400, then climbing right turn to 7500 direct FABAN and hold.

| | | | | |
|-------------|-----------------|---------------|-------------|-------------|
| D-ATIS | EL PASO APP CON | EL PASO TOWER | GND CON | CLNC DEL |
| 120.0 254.3 | 124.25 298.85 | 118.3 239.275 | 121.9 348.6 | 125.0 379.1 |



4400 7500 FABAN

VGSI and glidepath not coincident (VGSI Angle 3.00/TCH 75).

See planview for multiple IF locations.

RW26L

HOWRD

5200

GP 3.00° TCH 55

3.7 NM

265°

265° to RWY 26L

ELEV 3962

TDZE 3962

1200 X 150

5499 X 75

9025 X 150

0.5% UP

0.3% DOWN

TWR 4105

26L 26R

| | | | | |
|-------------|--------|-------------|---|---|
| CATEGORY | A | B | C | D |
| RNP 0.30 DA | 4275-½ | 313 (400-½) | | |

AUTHORIZATION REQUIRED

MIRL Rwy 8L-26R
REIL Rwys 4 and 8R
HIRL Rwys 4-22 and 8R-26L