

EL PASO, TEXAS

20142

## HI-VOR or TACAN RWY 26L

EL PASO INTL (KELP)

VORTAC ELP <b>115.2</b> Chan <b>99</b>	APCH CRS <b>245°</b>	Rwy ldg THRE Arpt Elev <b>9025</b> <b>3962</b> <b>3962</b>
--	-------------------------	---

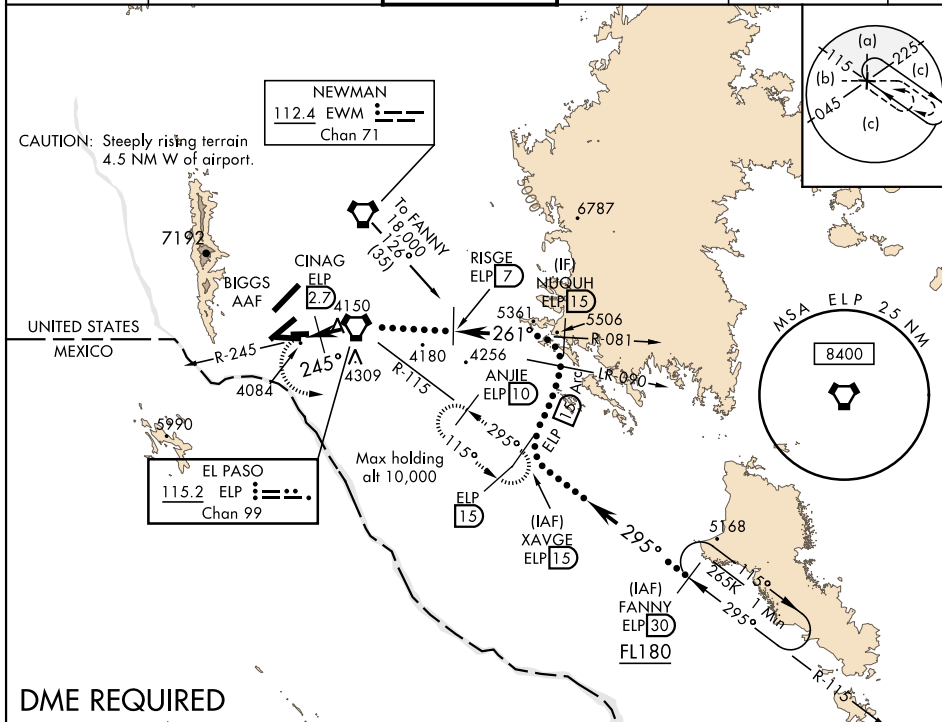
JAL-134 [USAF]

▼ \*When ALS inop, increase CAT CDE vis to 1½ miles.  
 \*\*Circling NA for CAT DE west of Rwy 4-22.



MISSED APPROACH: Climb to 4400, then climbing left turn to 7000 via heading 080° and ELP VORTAC R-115 to ANJIE/ELP 10 DME and hold, continue climb in hold to 7000.

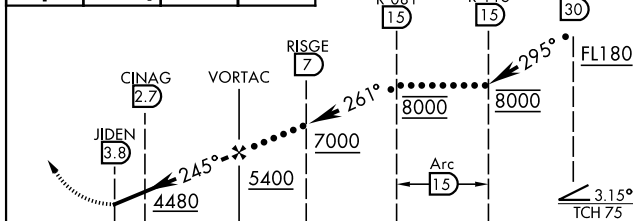
ATIS <b>120.0 254.3</b>	EL PASO APP CON S of V16 <b>119.15 353.5</b> N of V16 <b>124.25 298.85</b>	EL PASO TOWER <b>118.3 239.275</b>	GND CON <b>121.9 348.6</b>	CLNC DEL <b>125.0 379.1</b>	ASR
----------------------------	--	---------------------------------------	-------------------------------	--------------------------------	-----



## DME REQUIRED

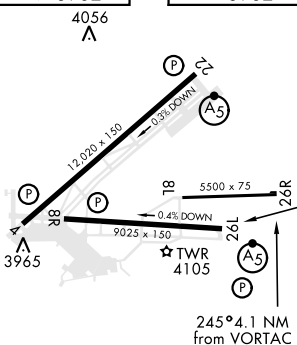
EMERG SAFE ALT 100 NM 16,000

4400	7000	ELP R-115	ANJIE ELP 10
------	------	-----------	--------------



CATEGORY	C	D	E
S-26L *	4340-1	378 (400-1)	
CIRCLING **	4460-1½ 498 (600-1½)	4680-2¼ 718 (800-2¼)	4700-2½ 738 (800-2½)

ELEV 3962 THRE 3962



REIL Rwy 4, 8R  
MIRL Rwy 8L-26R  
HIRL Rwy 4-22 and 8R-26L

EL PASO, TEXAS

31°48'N-106°23'W

EL PASO INTL (KELP)

Amdt 4A 21MAY20

## HI-VOR or TACAN RWY 26L

SC-3, 03 DEC 2020 to 31 DEC 2020