

FORT BLISS, TEXAS

# VOR or TACAN RWY 22

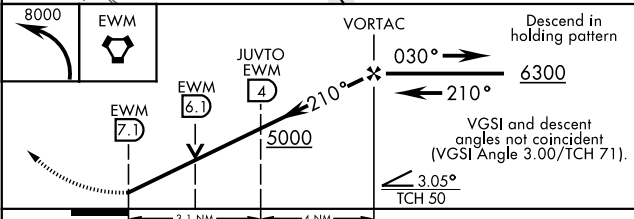
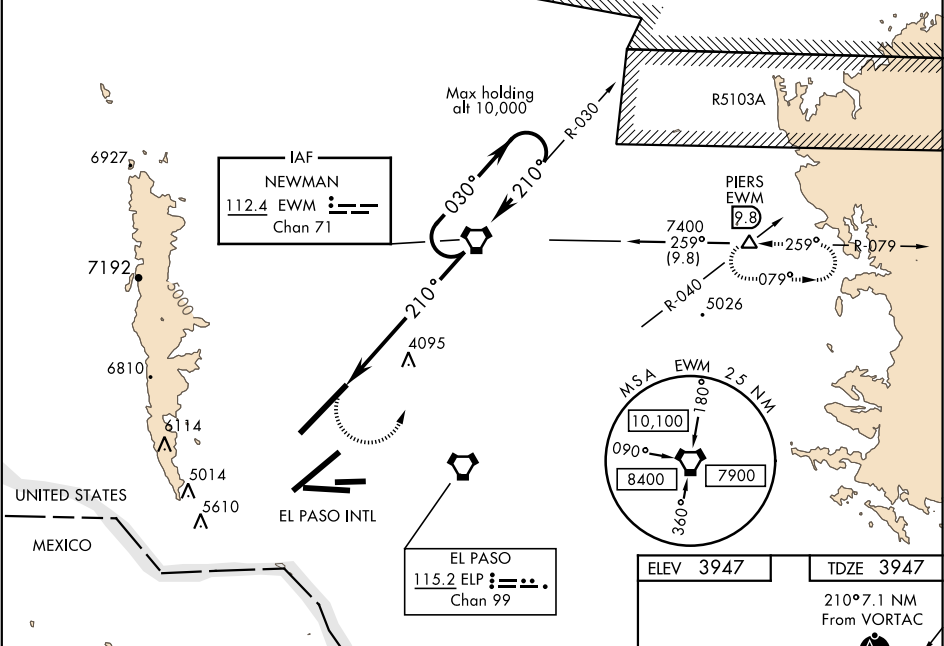
EWM VORTAC <b>112.4</b> Chan <b>71</b>	APCH CRS <b>210°</b>	Rwy Idg <b>13,554</b> TDZE <b>3947</b> Arprt Elev <b>3947</b>
--	-------------------------	---

AL-133 [USA]

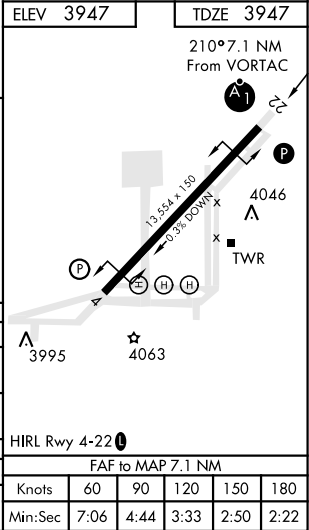
BIGGS AAF (KBIF)

<b>▼</b> Use El Paso Intl altimeter setting. * When ALS inop, increase CAT E vis to 3 miles. ** When ALS inop, increase CAT AB vis to 1 mile and CAT CDE to 1½ miles.			ALSF-1 	MISSED APPROACH: Climbing left turn to 8000 direct EWM VORTAC and hold, continue climb-in-hold to 8000. (TACAN only aircraft continue on EWM R-079 to PIERS INT/ EWM 9.8 DME and hold, continue climb-in-hold to 8200).		
ATIS <b>120.0 254.3</b>	EL PASO APP CON S of V16 <b>119.15 353.5</b> N of V16 <b>124.25 298.85</b>	BIGGS TOWER ★ <b>127.9 0 342.25</b>	GND CON <b>121.6 251.25</b>	EL PASO CLNC DEL <b>125.0 379.1</b>	ASR	

\*\*\* Circling CAT DE NA W of Rwy 3-21.  
 TACAN only equipped a/cft.  
 Final apch from holding patten NA.  
 RADAR vectors required to final approach course.



CATEGORY	A	B	C	D	E
S-22*	5000-¾ 1053(1100-¾)	5000-1 1053(1100-1)	5000-2½	1053	(1100-2½)
*** CIRCLING	5000-1¼ 1053(1100-1¼)	5000-1½ 1053(1100-1½)	5000-3	1053	(1100-3)
JUVTO FIX MINIMUMS					
S-22**	4360-¾	413	(500-¾)		
*** CIRCLING	4400-1	453 (500-1)	4540-1½ 593(600-1½)	4540-2	593 (600-2)



FORT BLISS, TEXAS  
 Amdt 8A 16JUL20

31° 51' N-106° 23' W

BIGGS AAF (KBIF)

# VOR or TACAN RWY 22

SC-3, 03 DEC 2020 to 31 DEC 2020

SC-3, 03 DEC 2020 to 31 DEC 2020