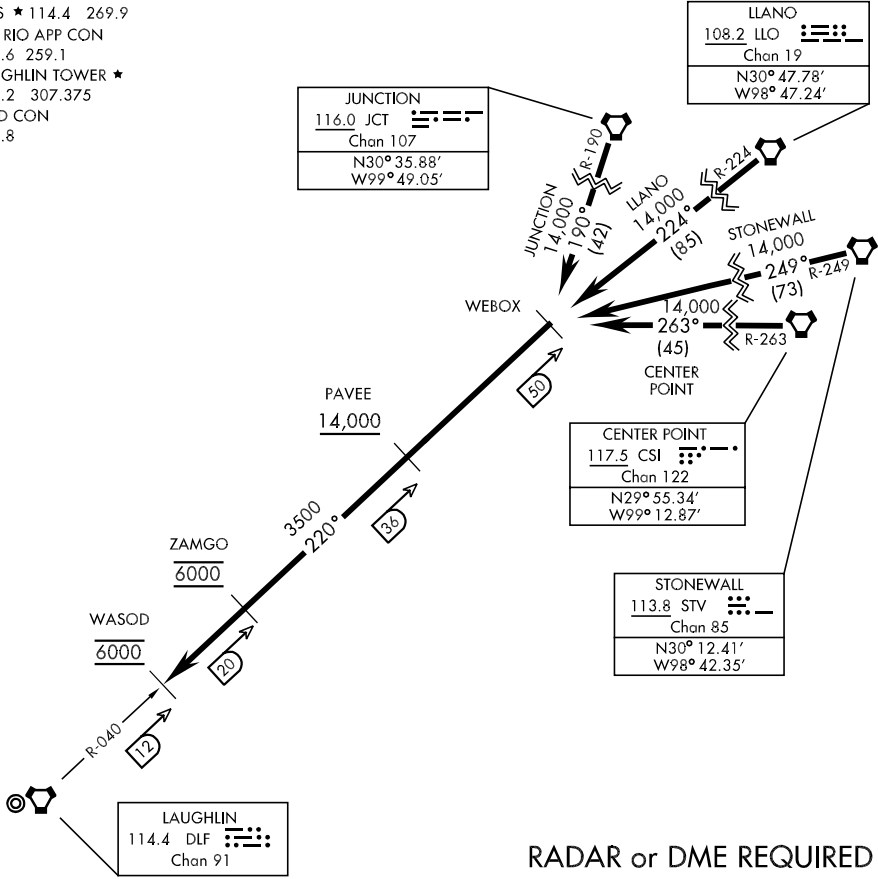


(WEBOX • WEBOX4)
WEBOX FOUR ARRIVAL

ST-111 [USAF]

LAUGHLIN AFB
DEL RIO, TEXAS

ATIS ★ 114.4 269.9
DEL RIO APP CON
119.6 259.1
LAUGHLIN TOWER ★
125.2 307.375
GND CON
275.8



ARRIVAL ROUTE DESCRIPTION

JUNCTION Transition (JCT.WEBOX4): From over JCT VORTAC via JCT R-190 to WEBOX. Thence...

LLANO Transition (LLO.WEBOX4): From over LLO VORTAC via LLO R-224 to WEBOX. Thence...

STONEWALL Transition (STV.WEBOX4): From over STV VORTAC via STV R-249 to WEBOX. Thence...

CENTER POINT Transition (CSI.WEBOX4): From over CSI VORTAC via CSI R-263 to WEBOX. Thence...

...From over DLF R-040/50 (WEBOX) via DLF R-040 to DLF R-040/12 (WASOD).
Expect vectors for an instrument approach to runway in use.

WEBOX FOUR ARRIVAL (WEBOX • WEBOX4)

DEL RIO, TEXAS
LAUGHLIN AFB