

RNAV (GPS) RWY 13C

APCH CRS	128°	13C	13L	13R
Rwy Idg	8852	8315	6571	
TDZE	1081	1078	1076	
Arpt Elev	1081			

AL-111 (USAF)

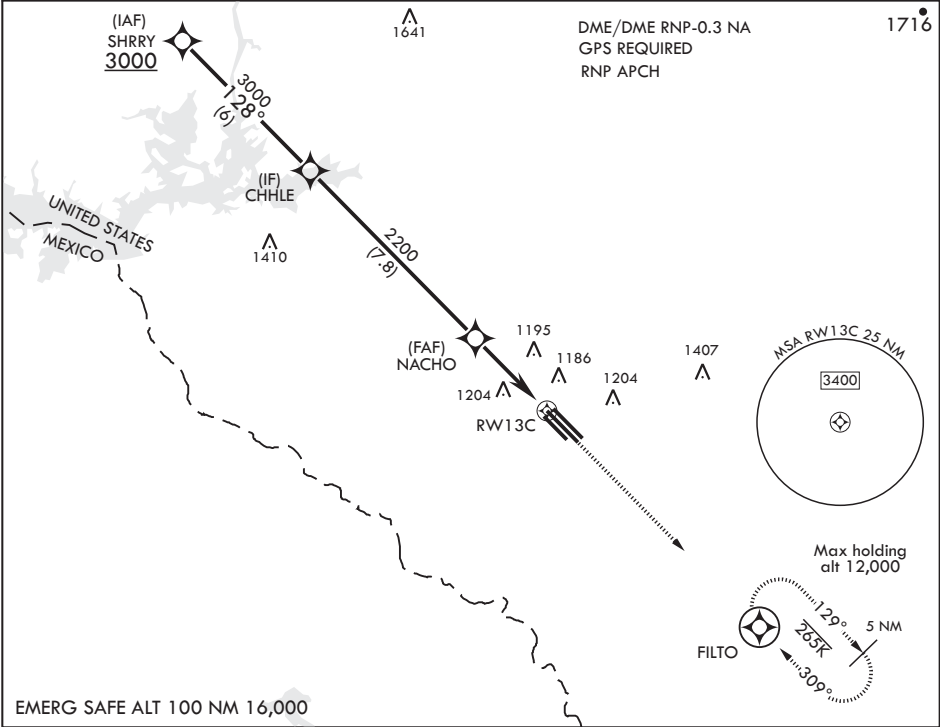
LAUGHLIN AFB (KDLF)

⚠ \* When ALS inop, increase CAT AB RVR to 55 and vis to 1 mile, CAT CDE vis to 1 1/4 miles.  
\*\* Circling SW of Rwy 13R-31L not authorized.

Rwy 13C  
ALSF-1

MISSED APPROACH: Climb to 3000 direct FILTO and hold.

ATIS★ 114.4 269.9	DEL RIO APP CON 119.6 259.1	TOWER★ 125.2 307.375	GND CON 275.8	CLNC DEL 120.5 335.8
----------------------	--------------------------------	-------------------------	------------------	-------------------------



CHHLE 3000

128°

NACHO 2200

1.3 NM to RW13C

3.4 NM

RW13C

3000

FILTO

ELEV 1081

128° to RW13C

TDZE 13C 1081  
TDZE 13L 1078  
TDZE 13R 1076

CATEGORY	A	B	C	D	E
LNAV MDA*	1520/24	439 (500-1/2)	1520/40	439 (500-3/4)	
SIDESTEP 13L	1520-1	442 (500-1)	1520-1 3/8	442 (500-1 3/8)	
SIDESTEP 13R	1520-1	444 (500-1)	1520-1 3/8	444 (500-1 3/8)	
CIRCLING**	1520-1 439 (500-1)	1540-1 459 (500-1)	1700-1 3/4 619 (700-1 3/4)	1700-2 619 (700-2)	1720-2 1/4 639 (700-2 1/4)

Rwy 31L Idg 6241'

MIRL Rwy 13R-31L

HIRL Rwys 13C-31C, 13L-31R

RNAV (GPS) RWY 13C

SC-3, 03 DEC 2020 to 31 DEC 2020

SC-3, 03 DEC 2020 to 31 DEC 2020