

DEL RIO, TEXAS

ILS or LOC/DME RWY 13C

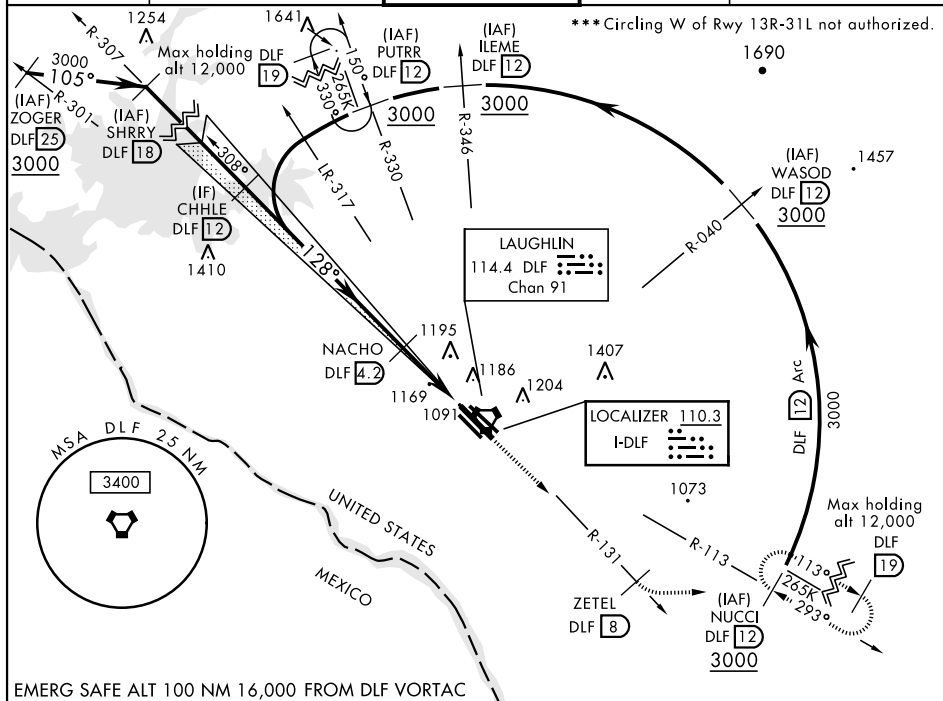
LOC I-DLF 110.3	APCH CRS 128°	Rwy Idg 13C 8852 13L 8315 TDZE 13C 1081 13L 1078 Arpt Elev 1081
---------------------------	-------------------------	--

AL-111 [USAF]

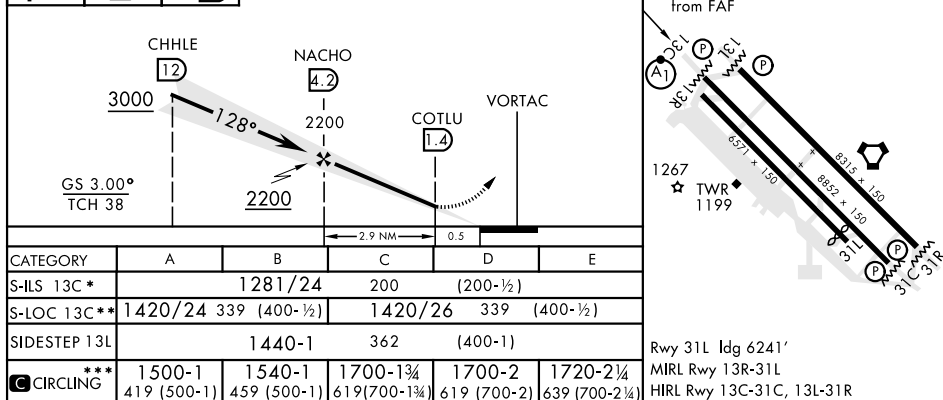
LAUGHLIN AFB (KDLF)

▼ * When ALS inop, increase RVR to 40 and vis to $\frac{3}{4}$ mile. ** When ALS inop, increase CAT AB RVR to 55 and vis to 1 mile, CAT CDE RVR to 50 and vis to 1 mile.	ALSF-1 	MISSED APPROACH: Climb to 3000 on DLF VORTAC R-131 to 8 DME (ZETEL), then turn left to intercept DLF R-113 to 12 DME (NUCCI) and hold.
---	------------	--

ATIS ★ 114.4 269.9	DEL RIO APP CON 119.6 259.1	LAUGHLIN TOWER ★ 125.2 307.375	GND CON 275.8	CLNC DEL 120.5 335.8
------------------------------	---------------------------------------	--	-------------------------	--------------------------------



3000 ↑ DLF R-131	ZETEL DLF 8	NUCCI R-113 DLF 12
---------------------------	-------------------	--------------------------



DEL RIO, TEXAS

29°22'N-100°47'W

LAUGHLIN AFB (KDLF)

Amdt 4 19JUL18

ILS or LOC/DME RWY 13C