

TACAN X RWY 31L

|         |      |           |         |
|---------|------|-----------|---------|
| TACAN   | NGP  | APCH CRS  | Rwy Idg |
| Chan 87 | 291° | TDZE      | 8002    |
|         |      | Arpt Elev | 18      |
|         |      |           | 19      |

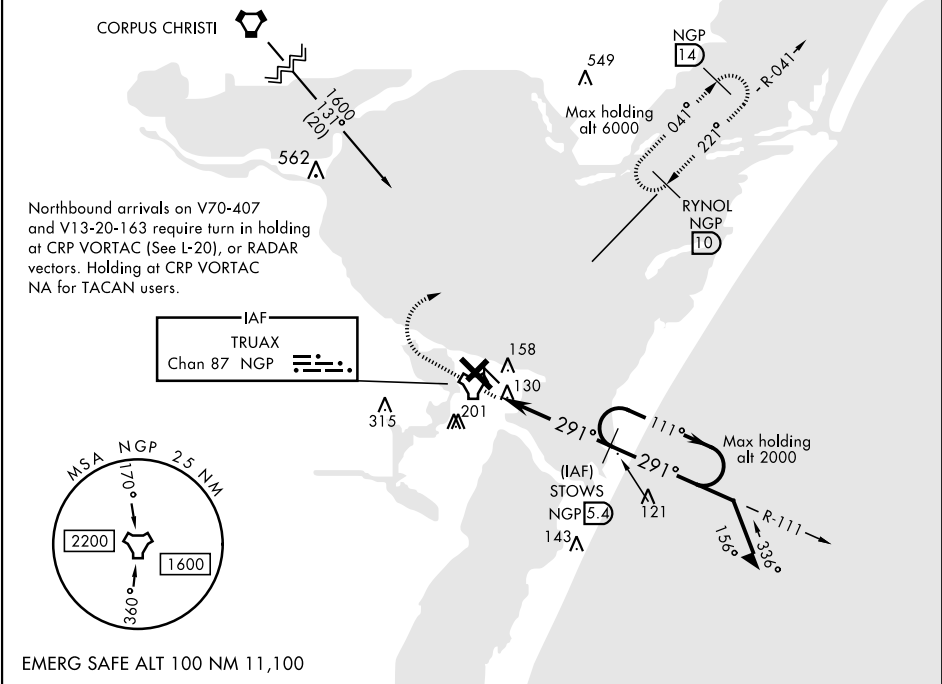
AL-98 [USN]

CORPUS CHRISTI NAS (TRUAX FLD) (KNGP)

**When local altimeter setting not received, use Corpus Christi altimeter setting.**

**MISSED APPROACH:** Climb to 1600 direct NGP TACAN and turn right to intercept R-041 and hold.

|                       |  |                                     |                         |                   |             |
|-----------------------|--|-------------------------------------|-------------------------|-------------------|-------------|
| ATIS ★<br>127.9 290.9 | CORPUS CHRISTI APP CON<br>128.675 343.75 | NAVY CORPUS TOWER ★<br>134.85 340.2 | GND CON<br>118.7 257.85 | CLNC DEL<br>314.3 | ASR/<br>PAR |
|-----------------------|--|-------------------------------------|-------------------------|-------------------|-------------|



\* VDP NA when using Corpus Christi altimeter setting.

TACAN

1600

111°

STOWS 5.4

BAWWI 1.7

2.98°

TCH 45

4.4 NMA

Remain within 10 NM of STOWS

1600

291°

1600

|                                  |                   |                   |                     |                   |
|----------------------------------|-------------------|-------------------|---------------------|-------------------|
| CATEGORY                         | A                 | B                 | C                   | D                 |
| S-31L                            | 420-1 402 (500-1) |                   | 420-1½ 402 (500-1½) |                   |
| CIRCLING                         | 480-1 461 (500-1) |                   | 540-1½ 521 (600-1½) | 620-2 601 (700-2) |
| CORPUS CHRISTI ALTIMETER SETTING |                   |                   |                     |                   |
| S-31L                            | 460-1 442 (500-1) |                   | 460-1½ 442 (500-1½) |                   |
| CIRCLING                         | 500-1 481 (500-1) | 520-1 501 (600-1) | 580-1½ 561 (600-1½) | 660-2 641 (700-2) |

ELEV 19 TDZE 18

NGP

NGP R-041

HIRL Rwy 4-22, 13R-31L

HIRL Rwy 13L-31R, 18-36

REIL Rwy 4-22, 13L-31R, 18-36, 31L

FAF to MAP 4.4 NM

|         |      |      |      |      |      |
|---------|------|------|------|------|------|
| Knots   | 60   | 90   | 120  | 150  | 180  |
| Min:Sec | 4:24 | 2:56 | 2:12 | 1:46 | 1:28 |

TACAN X RWY 31L

SC-3, 03 DEC 2020 to 31 DEC 2020

SC-3, 03 DEC 2020 to 31 DEC 2020