

RNAV (GPS) RWY 18

APCH CRS 177°	Rwy Idg 5002 TDZE 19 Arpt Elev 19
-------------------------	--

AL-98 [USN]

CORPUS CHRISTI NAS (TRUAX FLD) (KNGP)

RNP APCH - DME/DME RNP-0.3 NA.

T For uncompensated Baro-VNAV systems, LNAV/VNAV NA below -15°C (5°F) or above 54°C (129°F).

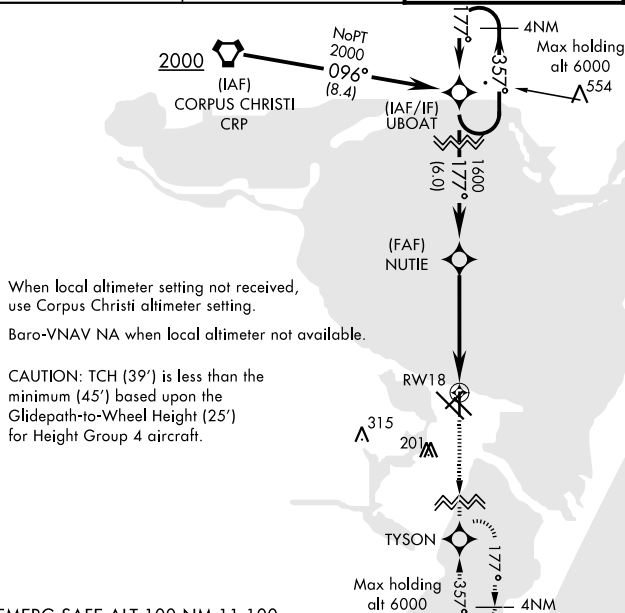
MISSED APPROACH: Climb to 2000 direct TYSON and hold.

ATIS ★
127.9 290.9

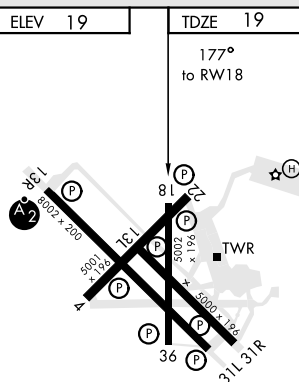
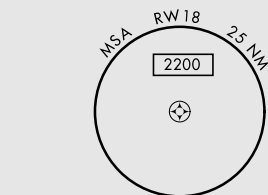
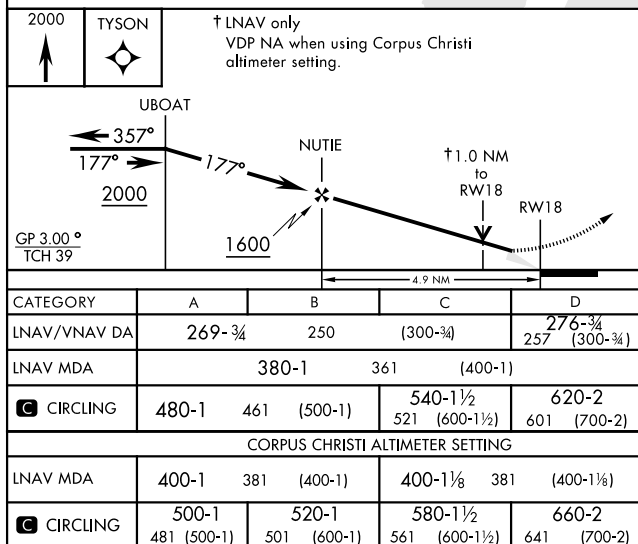
CORPUS CHRISTI APP CON
128,675 343.75

NAVY CORPUS TOWER ★
134.85 340.2

GND CON
118.7 257.85

CLNC DE
314.3ASR/
PAR

EMERG SAFE ALT 100 NM 11.100



HIRL Rwy 4-22, 13R-31L
HIRL Rwy 13L-31R, 18-36
REIL Rwy 4-22, 13L-31R, 18-36, 31L

CORPUS CHRISTI, TEXAS

27°42'N-97°17'W

CORPUS CHRISTI NAS (TRUAX FLD) (KNGP)

Amdt 1 16JUL20

RNAV (GPS) RWY 18