

RNAV (GPS) RWY 13L

APCH CRS	Rwy Idg	5000
132°	TDZE	19
	Arpt Elev	19

AL-98 [USN]

CORPUS CHRISTI NAS (TRUAX FLD) (KNGP)

RNP APCH - DME/DME RNP-0.3 NA.

T For uncompensated Baro-VNAV systems, LNAV/VNAV NA below -15°C (5°F) or above 54°C (129°F).

MISSED APPROACH: Climb to 600, then climbing right turn to 1600 direct POLCK and hold.

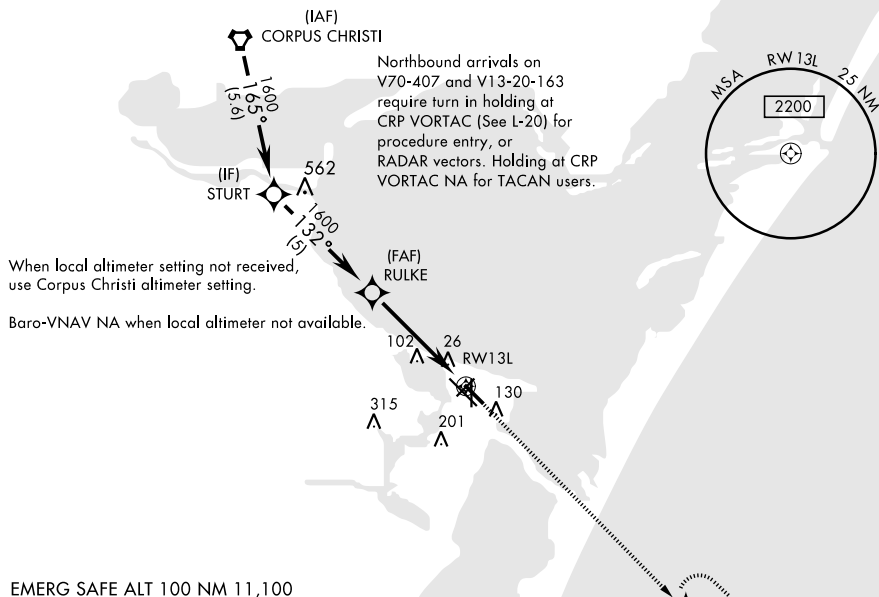
ATIS ★
127.9 29

CORPUS CHRISTI APP CON
128.675 343.75

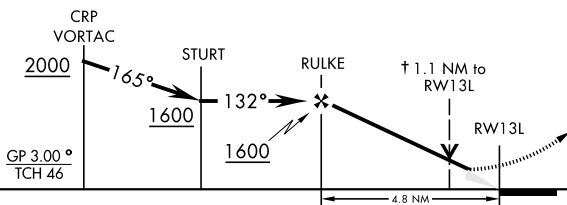
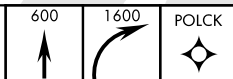
NAVY CORPUS TOWER ★
134.85 340.2

GND CON
118.7 257.85

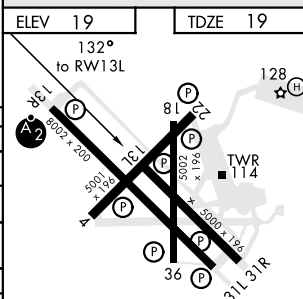
CLNC DEL
314.3

ASR/
PAR

EMERG SAFE ALT 100 NM 11,100

† LNAV only
VDP NA when using Corpus Christi altimeter setting.

CATEGORY	A	B	C	D
LNNAV/VNAV DA	269- $\frac{3}{4}$		250 (300- $\frac{3}{4}$)	
LNNAV MDA	400-1	381 (400-1)	400-1 $\frac{1}{8}$	381 (400-1 $\frac{1}{8}$)
C CIRCLING	480-1	461 (500-1)	540-1 $\frac{1}{2}$ 521 (600-1 $\frac{1}{2}$)	620-2 601 (700-2)
CORPUS CHRISTI ALTIMETER SETTING				
LNNAV MDA	420-1 401 (500-1)		420-1 $\frac{1}{8}$	401 (500-1 $\frac{1}{8}$)
C CIRCLING	500-1 481 (500-1)	520-1 501 (600-1)	580-1 $\frac{1}{2}$ 561 (600-1 $\frac{1}{2}$)	660-2 641 (700-2)



HIRL Rwy 4-22, 13R-31L
HIRL Rwy 13L-31R, 18-36
REIL Rwy 4-22, 13L-31R, 18-36, 31L

CORPUS CHRISTI, TEXAS

27°42'N-97°17'W

CORPUS CHRISTI NAS (TRUAX FLD) (KNGP)

RNAV (GPS) RWY 13L

Amdt 1 16JUL20

SC-3, 03 DEC 2020 to 31 DEC 2020