

WAAS CH 63231 W13A	APP CRS 132°	Rwy Idg TDZE 19 Apt Elev 22	7399
--	------------------------	---	-------------

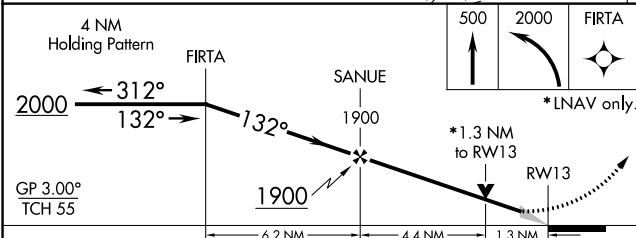
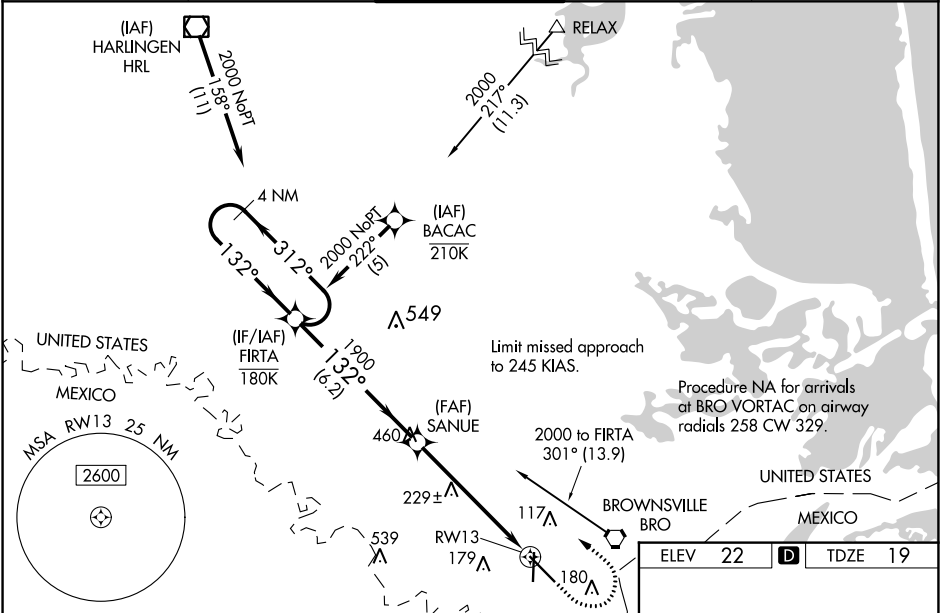
RNAV (GPS) RWY 13
BROWNSVILLE/SOUTH PADRE ISLAND INTL (BRO)

⚠ Circling to Rwy 18 NA at night. For uncompensated Baro-VNAV systems, procedure NA below 3°C (38°F) or above 54°C (130°F). DME/DME RNP-0.3 NA. When local altimeter setting not received use Port Isabel altimeter setting and increase LPV DA to 257 feet and LNAV/VNAV DA to 411 feet and all MDA 40 feet; increase LNAV/VNAV visibility all Cats to RVR 4500, LNAV visibility Cat C and D to RVR 5500. VDP and Baro-VNAV NA when using Port Isabel altimeter setting. For inop MALS, increase LNAV Cat C/D visibility to 1½ mile. **** RVR 1800 authorized with use of FD or AP or HUD to DA, NA when using Port Isabel altimeter setting.**

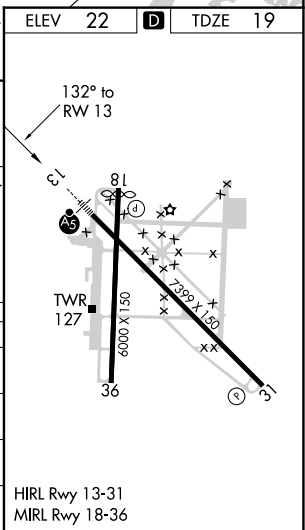
MALS

MISSED APPROACH:
Climb to 500 then climbing left turn to 2000 direct FIRTA and hold.

ATIS 128.55	VALLEY APP CON 119.5 257.6	BROWNSVILLE TOWER★ 118.9 (CTAF) 239.3	GND CON 121.9	UNICOM 122.95
-----------------------	--------------------------------------	--	-------------------------	-------------------------



CATEGORY	A	B	C	D
LPV DA **		219/24	200 (200-½)	
LNAV/VNAV DA		373/30	354 (400-¾)	
LNAV MDA	480/24	461 (500-½)	480/50	461 (500-1)
C CIRCLING	480-1 458 (500-1)	540-1 518 (600-1)	540-1½ 518 (600-1½)	680-2 658 (700-2)



SC-3, 03 DEC 2020 to 31 DEC 2020

SC-3, 03 DEC 2020 to 31 DEC 2020