

WAAS CH 52885 W36A	APP CRS 357°	Rwy Idg TDZE 1711 Apt Elev 1711
--	------------------------	---

RNAV (GPS) RWY 36

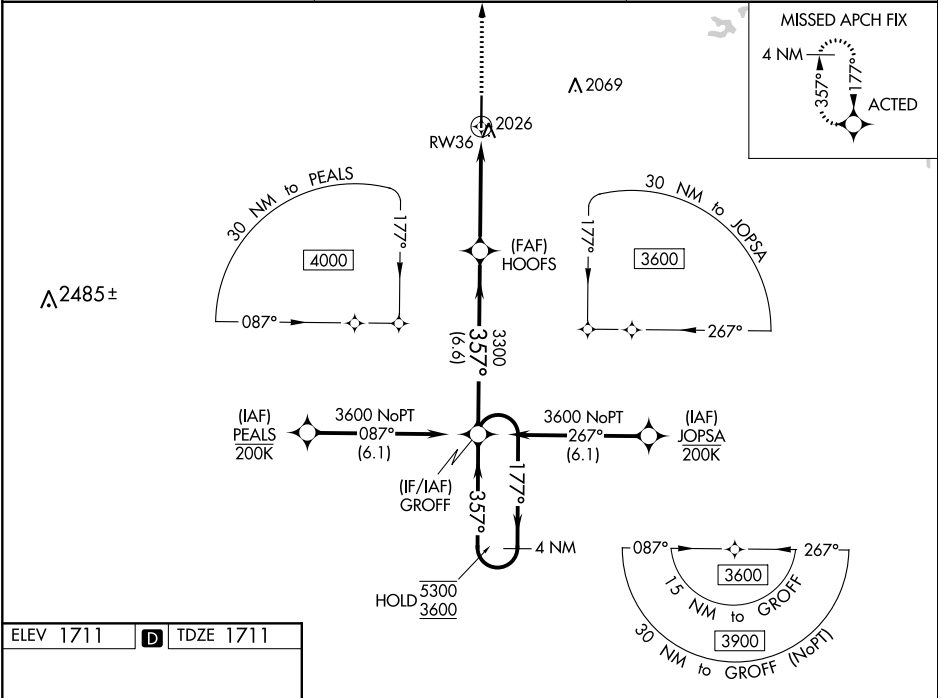
GREGORY M SIMMONS MEMORIAL (GZN)

RNP APCH.

⚠ Circling NA east of Rwy 18-36. Baro-VNAV NA when using Breckenridge altimeter setting. For uncompensated Baro-VNAV systems, LNAV/VNAV NA below -18°C or above 54°C. When local altimeter setting not received, use Breckenridge altimeter setting; increase all DAs 111 feet and LNAV/VNAV visibility all Cats to 1¾ SM; increase all MDAs 120 feet and visibility Cat C to 2 SM. Rwy 36 helicopter visibility reduction below 1 SM NA.

MISSED APPROACH:
Climb to 3500 direct
ACTED and hold.

AWOS-3PT 118.0	ABILENE APP CON 125.0 338.3	(CTAF) 122.9
--------------------------	---------------------------------------	------------------------



ELEV 1711	D	TDZE 1711
81	36	357° to RW36
6536 X 100		MIRL Rwy 18-36
3500	ACTED	VGSI and RNAV glidepath not coincident (VGSI angle 3.20/TCH 48).
4 NM	4 NM	4 NM
357°	357°	357°
3300	3300	3300
4.4 NM	6.6 NM	4 NM
CATEGORY	A	B
LPV DA	1961-1	250 (300-1)
LNAV/VNAV DA	2176-1¾	465 (500-1¾)
LNAV MDA	2280-1 569 (600-1)	2280-1½ 569 (600-1½)
CIRCLING	2280-1 569 (600-1)	2280-1½ 569 (600-1½)

SC-2, 03 DEC 2020 to 31 DEC 2020

SC-2, 03 DEC 2020 to 31 DEC 2020