

APP CRS  
168°

Rwy Idg  
TDZE  
Apt Elev

6004  
364  
364

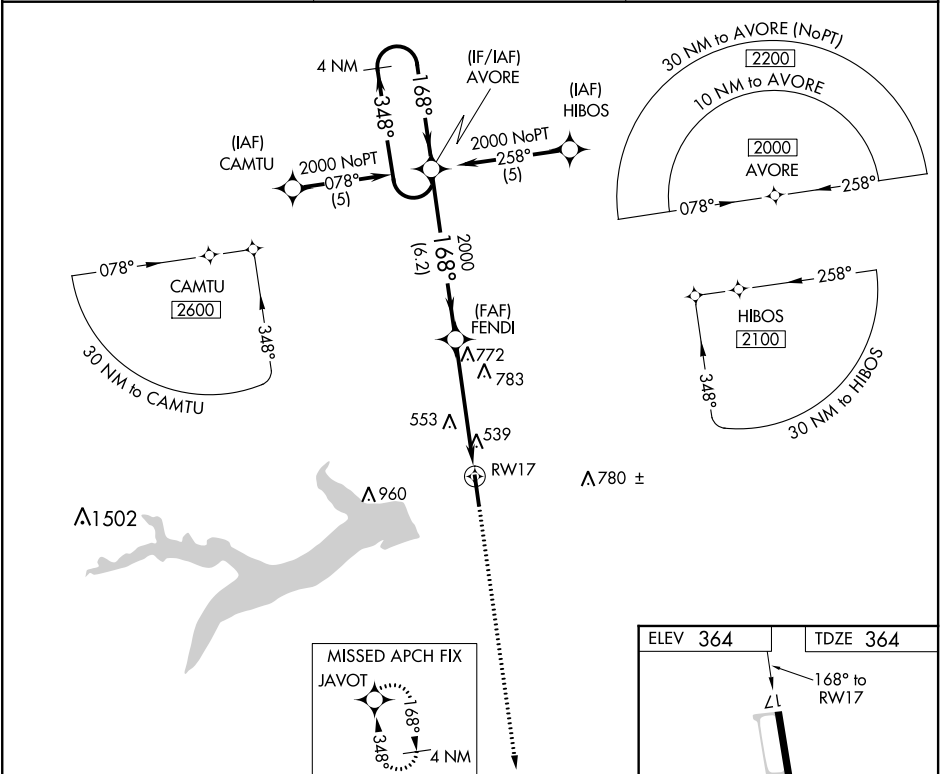
RNAV (GPS) RWY 17  
MOUNT PLEASANT RGNL (OSA)

▼  
▲

For uncompensated Baro-VNAV systems, LNAV/VNAV NA below -15°C (5°F) or above 48°C (118°F). DME/DME RNP-0.3 NA. When local altimeter setting not received, use Paris altimeter setting and increase all DA/MDA 120 feet, increase LNAV/VNAV visibilities ¼ mile all Cats, LNAV visibilities ½ mile all Cats, and circling visibilities ½ mile all Cats. VDP and Baro-VNAV NA when using Paris altimeter setting.

MISSED APPROACH: Climb to 2100 direct JAVOT and hold.

AWOS-3 119.775	FORT WORTH CENTER 132.025 360.75	UNICOM 122.7 (CTAF) 0
-------------------	-------------------------------------	--------------------------



4 NM Holding Pattern		AVORE		FENDI		<div><div>2100</div><div>↑</div></div>		<div><div>JAVOT</div><div>✦</div></div>	
<div><div>2000</div><div>← 348°</div><div>168° →</div><div>GP 3.00°</div><div>TCH 39°</div></div>				<div><div>2000</div><div>✕</div></div>		<div><div>*2.2 NM to RW17</div><div>↓</div></div>		<div><div>*LNAV only.</div><div>↗</div><div>RW17</div></div>	
		6.2 NM		2.8 NM		2.2			
CATEGORY	A		B		C		D		
LNAV/DA/VNAV	890-2 526 (600-2)								
LNAV MDA	1100-1 736 (800-1)				1100-2 736 (800-2)		1100-2¼ 736 (800-2¼)		
CIRCLING	1100-1 736 (800-1)				1100-2 736 (800-2)		1100-2¼ 736 (800-2¼)		

