


ILS or LOC RWY 34R

- | | | |
|--|--|--|
| <p>⚠ Circling NA east of Rwy 16L-34R.</p> <p>⚠ For inop ALS, increase S-ILS 34R Cat E visibility to RVR 4000 and S-LOC 34R, Cat E visibility to 1½ SM.</p> | <p>MALSR</p>  | <p>MISSED APPROACH: Climb to 1200 then climbing left turn to 3000 on heading 270° and FUZ VORTAC R-303 to OBLQN INT/FUZ 24 DME and hold.</p> |
|--|--|--|

The image contains two radar diagrams, labeled (a) and (b), showing aircraft positions and radar requirements. Both diagrams include a central label "RADAR REQUIRED".

Diagram (a) Left:

- Aircraft 1487 is at the top left, with a heading of 123° and a distance of (310K).
- Aircraft R-033 is at the top right, with a heading of 303°.
- Aircraft R-303 is at the bottom right, with a heading of 303°.
- Aircraft R-297 is at the bottom left, with a heading of 297°.
- Radar requirements are listed: 117.7 MQP Chan 124, 113.1 TTT Chan 78, and 115.7 FUZ Chan 104.
- A label "OBLON FUZ [24]" is present.

Diagram (b) Right:

- Aircraft 1487 is at the top left, with a heading of 123° and a distance of (310K).
- Aircraft R-033 is at the top right, with a heading of 303°.
- Aircraft R-303 is at the bottom right, with a heading of 303°.
- Aircraft R-297 is at the bottom left, with a heading of 297°.
- Radar requirements are listed: 117.7 MQP Chan 124, 113.1 TTT Chan 78, and 115.7 FUZ Chan 104.
- A label "OBLON TTT [30.4]" is present.
- An "ALTERNATE MISSED APPROACH FIX" is indicated.

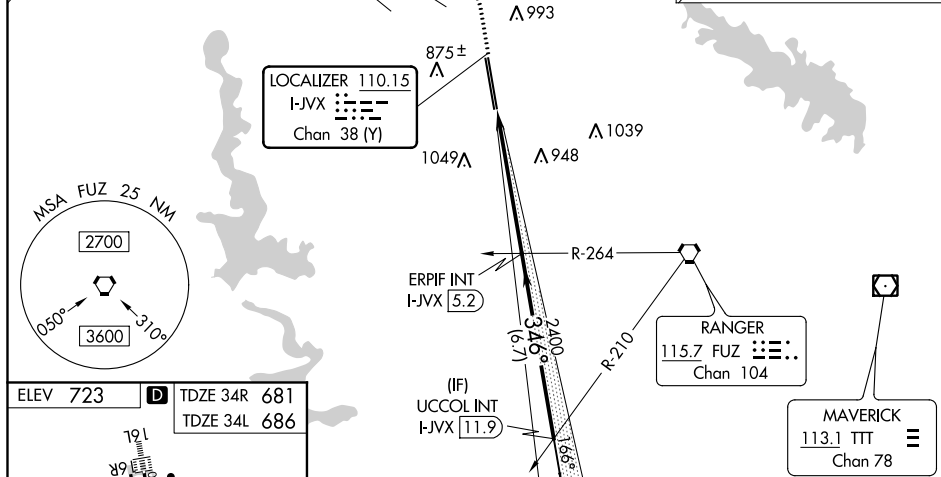


Figure 1 is a 3D approach chart for a runway. It includes a 3D perspective view of the approach path, showing the runway, taxiway, and surrounding terrain. Key features include:

- 3D View:** A perspective view of the approach path, showing the runway, taxiway, and surrounding terrain.
- Category:** S-ILS 34R.
- S-LOC 34R:** 1240/24 559 (600-1/2).
- SIDESTEP 34L:** 1240-1 554 (600-1), 1240-1 1/2 554 (600-1 1/2), 1240-2 554 (600-2).
- C CIRCLING:** 1240-1 517 (600-1), 1320-1 597 (600-1), 1360-1 637 (700-1 1/4), 1380-2 657 (700-2), 1380-2 1/4 657 (700-2 1/4).
- Speeds and Times:**

Knots	60	90	120	150	180
Min:Sec	5:18	3:32	2:39	2:07	1:46
- Other Data:**
 - Category: S-ILS 34R
 - S-LOC 34R: 1240/24 559 (600-1/2)
 - SIDESTEP 34L: 1240-1 554 (600-1), 1240-1 1/2 554 (600-1 1/2), 1240-2 554 (600-2)
 - C CIRCLING: 1240-1 517 (600-1), 1320-1 597 (600-1), 1360-1 637 (700-1 1/4), 1380-2 657 (700-2), 1380-2 1/4 657 (700-2 1/4)

SC-2, 03 DEC 2020 to 31 DEC 2020