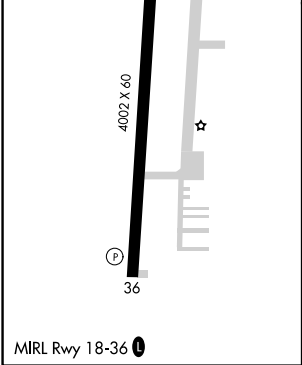
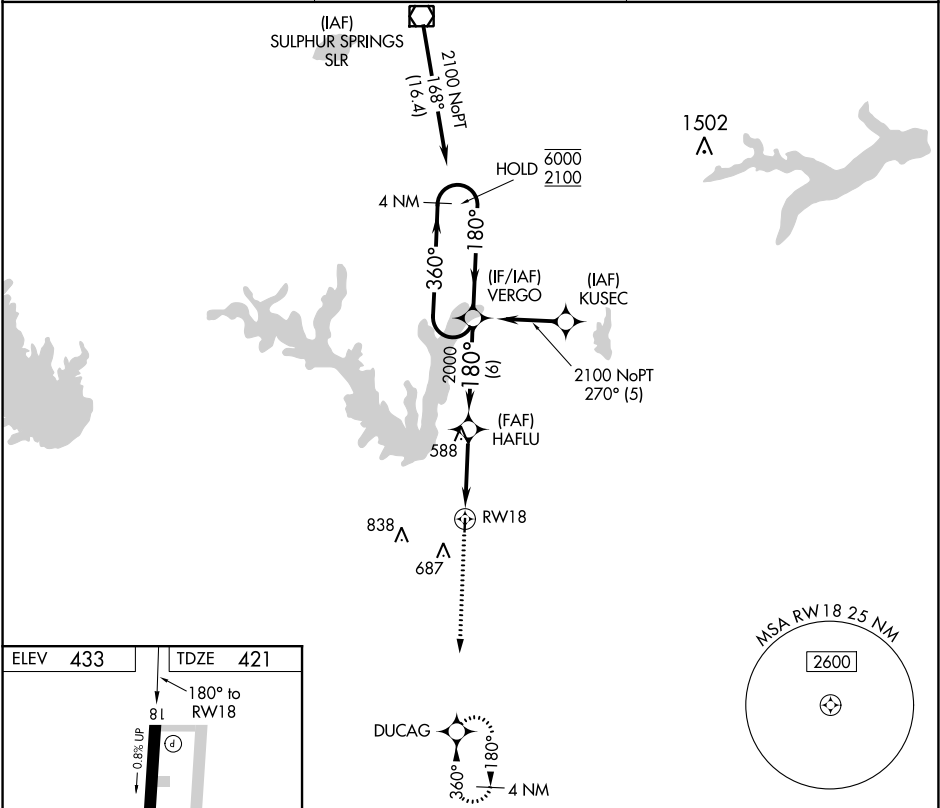


APP CRS	Rwy Idg	4002
180°	TDZE	421
	Apt Elev	433

RNAV (GPS) RWY 18
WOOD COUNTY-COLLINS FIELD (JDD)

RNP APCH.	MISSED APPROACH: Climb to 2200 direct DUCAG and hold.
▼ Circling Rwy 36 NA at night. ▲ Rwy 18 helicopter visibility reduction below ¾ SM NA.	

AWOS-3 118.9	LONGVIEW APP CON ★ 128.75 379.15	UNICOM 122.8 (CTAF) 0
-----------------	-------------------------------------	--------------------------



2200	DUCAG	VGSI and descent angles not coincident (VGSI Angle 3.00/TCH 30).	VERGO	4 NM Holding Pattern
1.2	3.6 NM	6 NM		
1.2 NM to RW18	3.05° TCH 40	1.80°	360°	180°
2000	6000	2100		
CATEGORY	A	B	C	D
LNAV MDA	820-1 399 (400-1)	820-1 399 (400-1 1/8)	820-1 399 (400-1 1/8)	NA
CIRCLING	920-1 487 (500-1)	940-1 507 (600-1)	1000-1 567 (600-1 1/2)	NA