

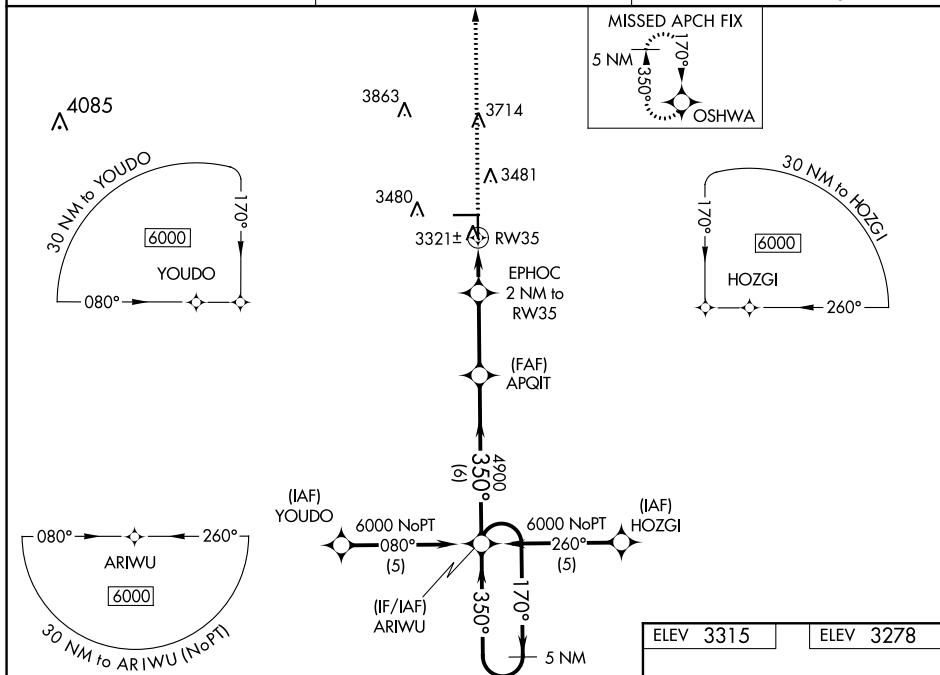
WAAS CH 72918 W35A	APP CRS 350°	Rwy Idg 5002 TDZE 3278 Apt Elev 3315
--	------------------------	---

RNAV (GPS) RWY 35
GAINES COUNTY (GNC)

T For uncompensated Baro-VNAV systems, LNAV/VNAV NA below -21°C (-5°F) or above 54°C (130°F).
A DME/DME RNP-0.3 NA. When local altimeter setting not received, use Midland Intl Air and Space Port altimeter setting and increase all DA 177 feet, all MDA 180 feet, increase LPV all Cats and LNAV Cat C visibility ½ mile, LNAV/VNAV all Cats and Circling Cat C visibility ¾ mile. Baro-VNAV and VDP NA when using Midland Intl Air and Space Port altimeter setting.

MISSED APPROACH: Climb to 6000 direct OSHA and hold, continue climb-in-hold to 6000.

AWOS-3 118,075	FORT WORTH CENTER 132.6 269.05	UNICOM 122.8 (CTAF) 0
--------------------------	--	---------------------------------



VGSi and RNAV glidepath not coincident (VGSi Angle 3.00/TCH 37).

*LNAV only.

EPHOC
2 NM to RW35

APQIT
4900

ARWU
5 NM Holding Pattern

170° →
← 350°

6000

*0.9 NM to RW35

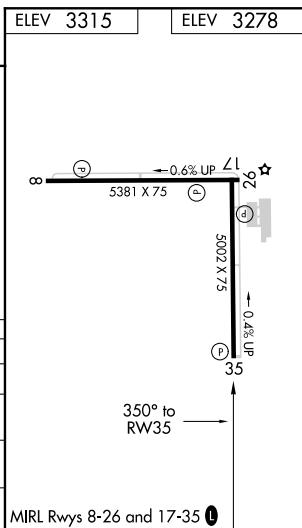
RW35

*3940

GP 3.00° TCH 40

0.9 1.1 2.9 NM 6 NM

CATEGORY	A	B	C	D
LPV DA	3528-1	250 (300-1)		NA
LNAV/VNAV DA	3591-1½	313 (300-1¼)		NA
LNAV MDA	3580-1	302 (300-1)		NA
CIRCLING	3840-1	525 (600-1)	3880-1½ 565 (600-1½)	NA



RNAV (GPS) RWY 35