

WAAS CH 87102 W18A	APP CRS 179°	Rwy Idg 7002 TDZE 576 Apt Elev 589
--	------------------------	---

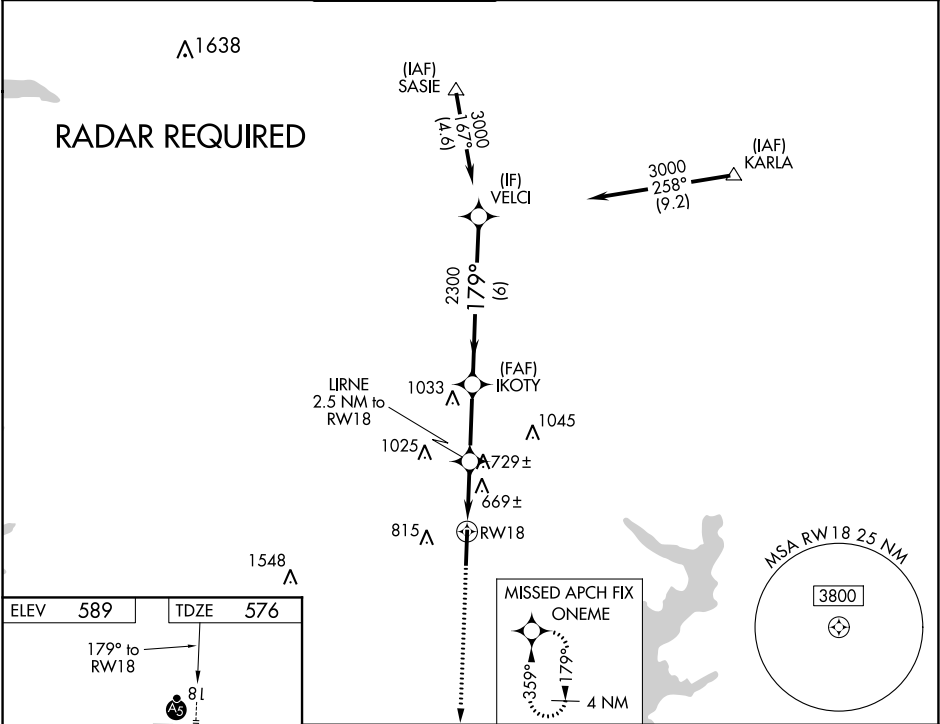
RNAV (GPS) RWY 18
MCKINNEY NATIONAL (TKI)

⚠ DME/DME RNP-0.3 NA. VDP NA with Dallas Love Field altimeter setting. When local altimeter setting not received, use Dallas Love Field altimeter setting and increase all DA 70 feet and all MDA 80 feet, increase LNAV Cats C and D ½ mile, and Circling Cats C and D visibility ½ mile. For inop MALS when using Dallas Love Field altimeter setting increase LPV all Cats visibility to 1 mile.

MALS

⚠ MISSED APPROACH: Climb to 3000 direct ONEME and hold.

ASOS 119.925	REGIONAL APP CON 124.3 282.275	MC KINNEY TOWER ★ 118.825 (CTAF) 0	GND CON 121.875	CLNC DEL 121.35 (When twr closed)	UNICOM 122.95
------------------------	--	---	---------------------------	--	-------------------------



HIRL Rwy 18-36

<div> <div>3000</div> <div>ONEME</div> </div>		<div> <div>VELCI</div> <div>3000</div> </div>	
<div> <div>*LNAV only.</div> <div> <div>LIRNE</div> <div>2.5 NM to RW18</div> </div> </div>		<div> <div>IKOTY</div> <div>2300</div> </div>	
<div> <div>*0.9 NM to RW18</div> <div> <div>0.9 NM</div> <div>1.6 NM</div> </div> </div>		<div> <div>*1420</div> <div>2300</div> </div>	
<div> <div>0.9 NM</div> <div>1.6 NM</div> </div>		<div> <div>2.8 NM</div> <div>6 NM</div> </div>	
CATEGORY	A	B	C
LPV DA	776-½		200 (200-½)
LNAV MDA	920-½ 344 (400-½)		920-⅝ 344 (400-⅝)
CIRCLING	1040-1 451 (500-1)	1120-1 531 (600-1)	1200-1¾ 611 (700-1¾)