


ILS or LOC RWY 18  
MCKINNEY NATIONAL (TKI)

**▼** VDP NA when using Dallas Love Field altimeter setting. When local altimeter setting not received, use Dallas Love Field altimeter setting and increase all DA 70 feet and all MDA 80 feet, increase S-LOC 18 Cats C/D visibility  $\frac{1}{8}$  SM, increase Circling visibility Cat C  $\frac{1}{2}$  SM, Cat D  $\frac{1}{4}$  SM. For inop ALS, increase S-LOC 18 Cats C/D visibility to 1 SM. For inop ALS when using Dallas Love Field altimeter setting, increase S-LS 18 all Cats visibility to  $\frac{1}{8}$  SM and increase S-LOC 18 Cats C/D to  $1\frac{1}{4}$  SM.

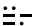



**MISSED APPROACH:**  
Climb to 1500 then  
climbing left turn to 2400  
on heading 360° and on  
TTT VOR/DME R-042 to  
BRDJE/TTT 41.5 DME  
and hold.

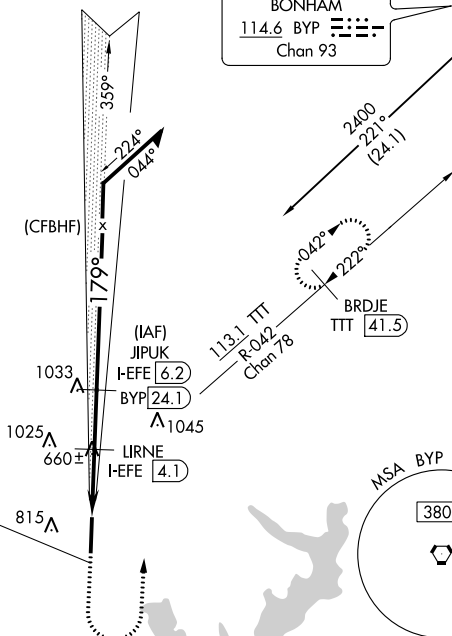
ALTERNATE MISSED  
APCH FIX

BONHAM  
BYP 

114.6  
Chan 93



BONHAM  
114.6 BYP   
Chan 93



LOCALIZER 109.35  
I-EFE ::-.  
Chan 30 (Y)

1500 ↑	2400 hdg 360°	TTT R-042	BRDJE TTT 41.5	JIPUK I-EFE 6.2	Remain within 10 NM
*LOC only.					
CATEGORY	A		B	C	D
S-ILS 18			776-½	200 (200-½)	
S-LOC 18	920-½	344 (400-½)		920-⅝	344 (400-⅝)
<b>C</b> CIRCLING	1040-1 451 (500-1)	1120-1 531 (600-1)	1200-1¾ 611 (700-1¾)	1380-2½ 791 (800-2½)	