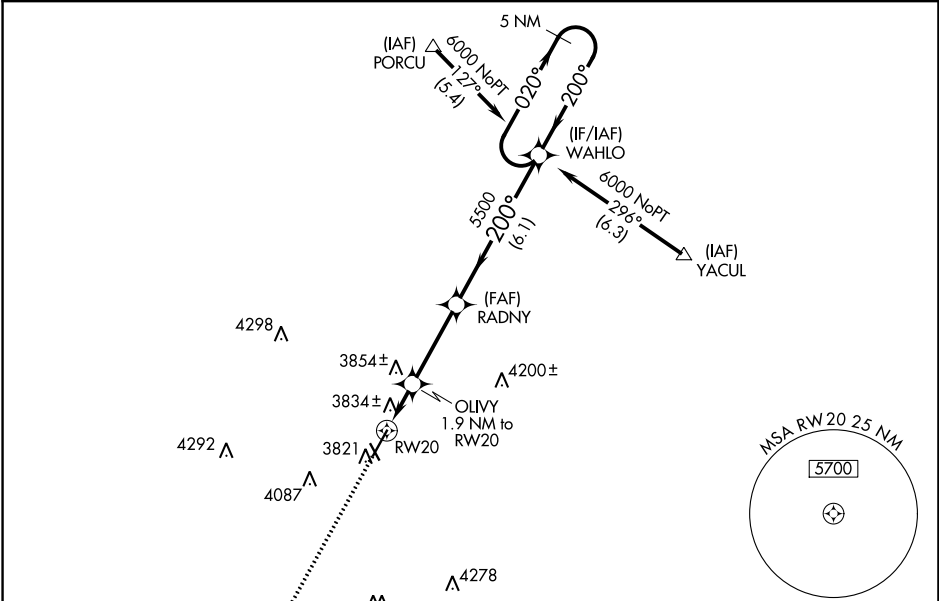


WAAS CH 61216 W20A	APP CRS 200°	Rwy Idg 6100 TDZE 3786 Apt Elev 3788
--	------------------------	---

RNAV (GPS) RWY 20
HEREFORD MUNI (H.R.X)

RNP APCH. ▼ For uncompensated Baro-VNAV systems, LNAV/VNAV NA below -22°C (-7°F) or above 41°C (105°F). ▲ When local altimeter setting not received, use Amarillo Intl altimeter setting and increase all DA 112 feet and all MDA 120 feet, increase LPV and LNAV/VNAV visibility all Cats and Circling Cats C/D visibilities ¼ mile, and increase LNAV Cats C/D visibilities ½ mile. Baro-VNAV NA when using Amarillo Intl altimeter setting. VDP NA with Amarillo Intl altimeter setting.	MISSED APPROACH: Climb to 6000 direct LEMGE and hold.
---	--

AWOS-3 118.05	AMARILLO APP CON* 119.5 307.0	UNICOM 122.8 (CTAF) 0
-------------------------	---	---------------------------------



LEMG 020° 200° 5 NM

6000 LEMGE

*LNAV only. *1.2 NM to RW20

OLIVY 1.9 NM to RW20

RW20

1.2 NM 0.7 NM 3.3 NM 6.1 NM

CATEGORY A B C D

LPV DA 3986-3/4 200 (200-3/4)

LNAV/DA 4120-1 1/4 334 (400-1 1/4)

LNAV MDA 4220-1 434 (500-1) 4280-1 1/2 434 (500-1 1/2)

CIRCLING 4280-1 492 (500-1) 4280-1 1/2 434 (500-1 1/2)

ELEV 3788 TDZE 3786

200° to RW20

5 NM Holding Pattern

020° 6000

200°

GP 3.00° TCH 48

5500

5500

4420

3854 ± 3834 ± 3821

OLIVY 1.9 NM to RW20

4298 4292 4087 4438 4293 4278

FAF RADNY

(IF/IAF) WAHLO

5500 200° (6.1)

6000 NoPT 290° (6.3)

(IAF) YACUL

5 NM

(IAF) PORCU

6000 NoPT 120° (5.4)

MSA RW20 25 NM 5700

MIRL Rwy 2-20 0

SC-2, 03 DEC 2020 to 31 DEC 2020

SC-2, 03 DEC 2020 to 31 DEC 2020