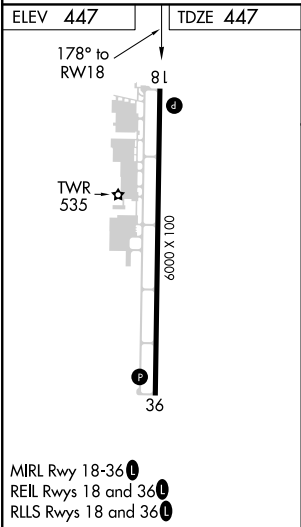
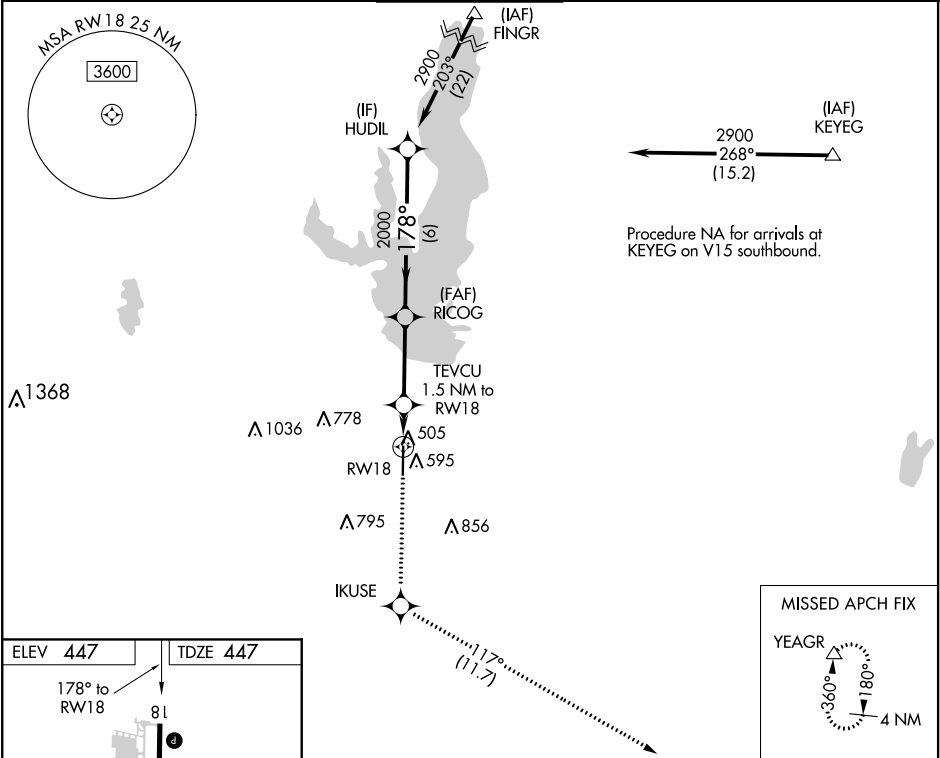


WAAS CH 58301 W18A	APP CRS 178°	Rwy Idg 6000 TDZE 447 Apt Elev 447
--	------------------------	---

RNAV (GPS) RWY 18
MESQUITE METRO (HQZ)

⚠ DME/DME RNP-0.3 NA. When local altimeter setting not received, use Dallas Love Field altimeter setting and increase all DA/MDA 60 feet. Increase LPV all Cats visibility to 1 mile, LNAV Cat C visibility to 1 3⁄8 and Circling Cat C visibility to 2 1⁄4. Helicopter visibility reduction below 3⁄4 SM NA.	MISSED APPROACH: Climb to 3000 direct IKUSE then on track 117° to YEAGR and hold.
--	--

AWOS-3 118.175	REGIONAL APP CON 125.2 343.65	MESQUITE TOWER★ 120.3 (CTAF) 0	GND CON 118.85	UNICOM 123.05
--------------------------	---	---	--------------------------	-------------------------



3000	IKUSE	tr 117°	YEAGR	HUDIL
*RNAV only.				
TEVCU 1.5 NM to RW18				
RICOG 2000				
RW18				
*980				
GP 3.00° TCH 56				
1.5 NM 3.1 NM 6 NM				
CATEGORY	A	B	C	D
LPV DA	697-3⁄4 250 (300-3⁄4)			NA
LNAV MDA	860-1	413 (500-1)	860-1 1⁄8 413 (500-1 1⁄8)	NA
CIRCLING	960-1	513 (600-1)	1160-2 713 (800-2)	NA