

LOC/DME I-HQZ
109.75
Chan 34 (Y)

APP CRS
358°

Rwy Idg
TDZE **443**
Apt Elev **447**

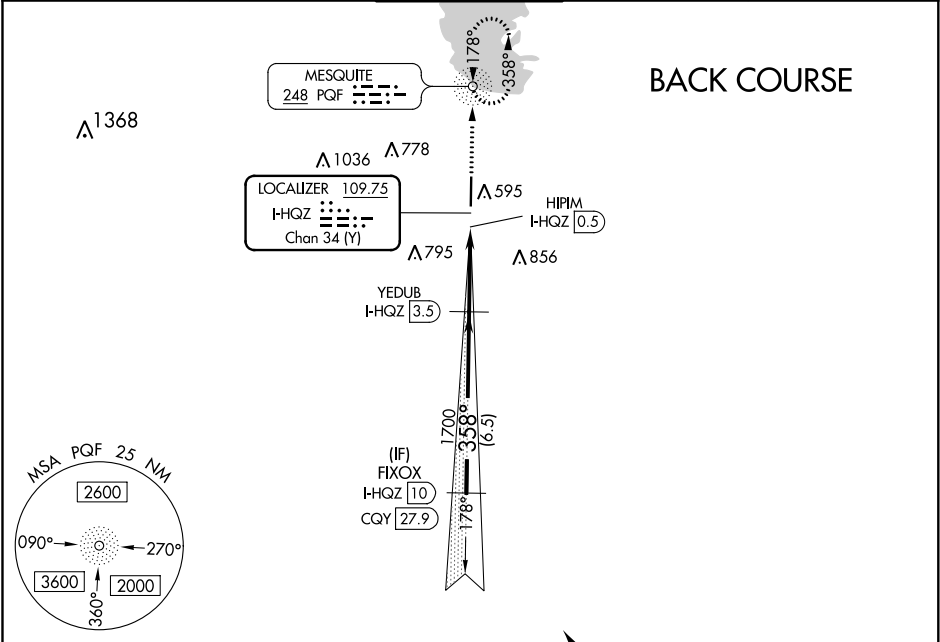
LOC/DME BC RWY 36

MESQUITE METRO (HQZ)

ADF required. When local altimeter setting not received, use Dallas-Love Field altimeter setting and increase all MDA 60 feet; increase S-36 Cat C visibility to 1½ mile and Circling Cat C visibility to 2¼ mile.

MISSED APPROACH: Climb to 2000 direct PQF NDB and hold.

AWOS-3 118.175	REGIONAL APP CON 125.2 343.65	MESQUITE TOWER★ 120.3 (CTAF) 0	GND CON 118.85	UNICOM 123.05
--------------------------	---	--	--------------------------	-------------------------



ELEV 447

TDZE 443

81

4

TWR 535

001 X 0009

36

358° 3.8 NM from FAF

MIRL Rwy 18-36

REIL Rwy 18 and 36

RLS Rwy 18 and 36

Procedure NA for arrivals on CQY VORTAC airway radials 263 CW 353.

2000

PQF

Disregard Glide Slope indications.

FIXOX
I-HQZ 10

YEDUB
I-HQZ 3.5

HIPIH
I-HQZ 0.5

≤ 3.00°
TCH 42

1700

358°

2000

Procedure Turn NA

0.8 NM

3 NM

6.5 NM

CATEGORY	A	B	C	D
S-36	880-1	437 (500-1)	880-1¼ 437 (500-1¼)	NA
CIRCLING	960-1	513 (600-1)	1160-2 713 (800-2)	NA

SC-2, 03 DEC 2020 to 31 DEC 2020

SC-2, 03 DEC 2020 to 31 DEC 2020