

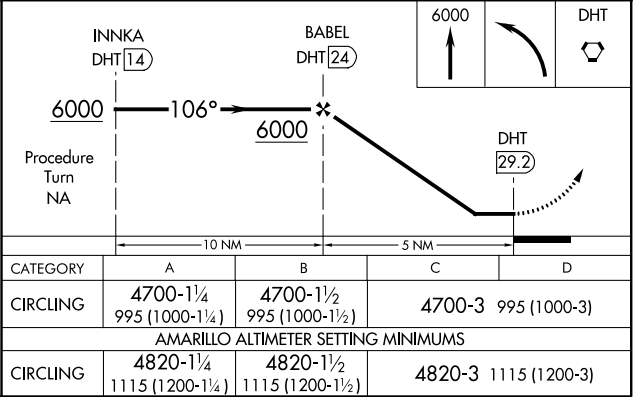
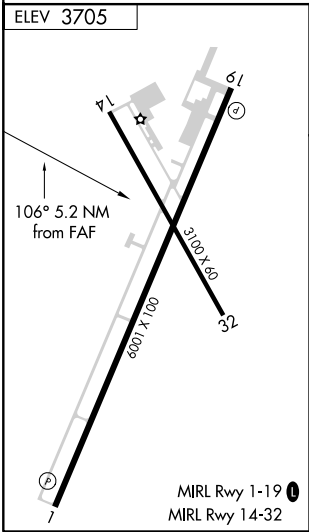
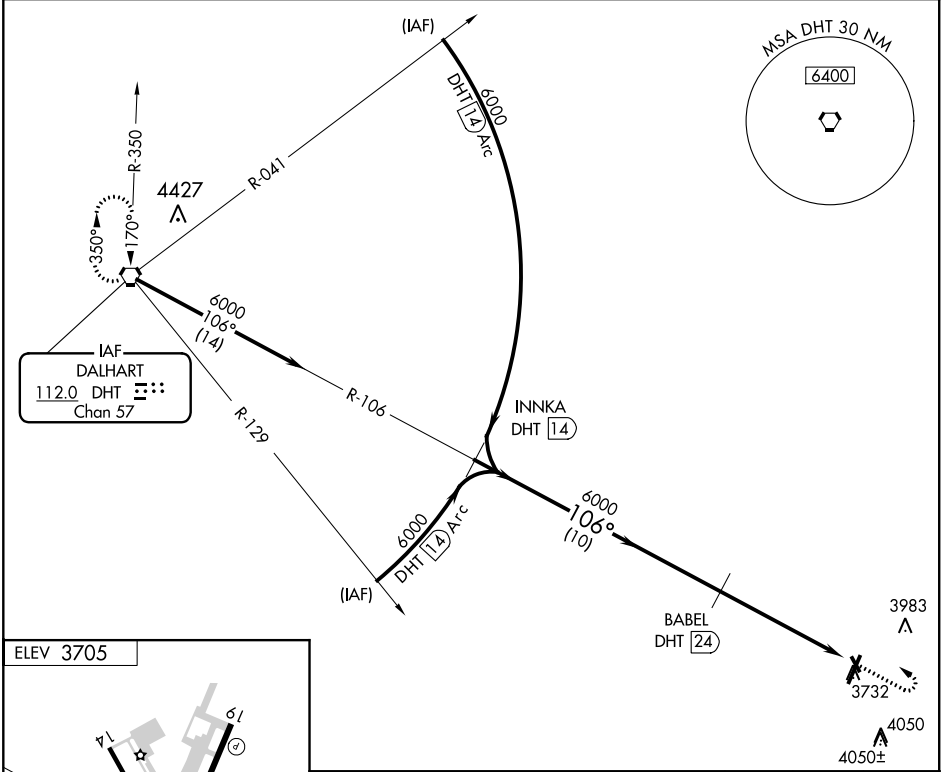
▼

NA

Obtain local altimeter on CTAF; when not received, use Amarillo altimeter setting. When neither received, procedure not authorized. Helicopter visibility reduction below 1 SM NA. Night landing: Rwy 14, 32 NA.

MISSED APPROACH: Climb to 6000 then turn left direct DHT VORTAC and hold.

AWOS-3 118.075	ALBUQUERQUE CENTER 127.85 285.475	UNICOM 122.8 (CTAF) 0
-------------------	--------------------------------------	--------------------------



SC-2, 03 DEC 2020 to 31 DEC 2020

SC-2, 03 DEC 2020 to 31 DEC 2020