

WAAS CH 42637 W04A	APP CRS 038°	Rwy Idg TDZE Apt Elev	5004 2387 2396
--	------------------------	-----------------------------	---

RNAV (GPS) RWY 4

HEMPHILL COUNTY (HHF)

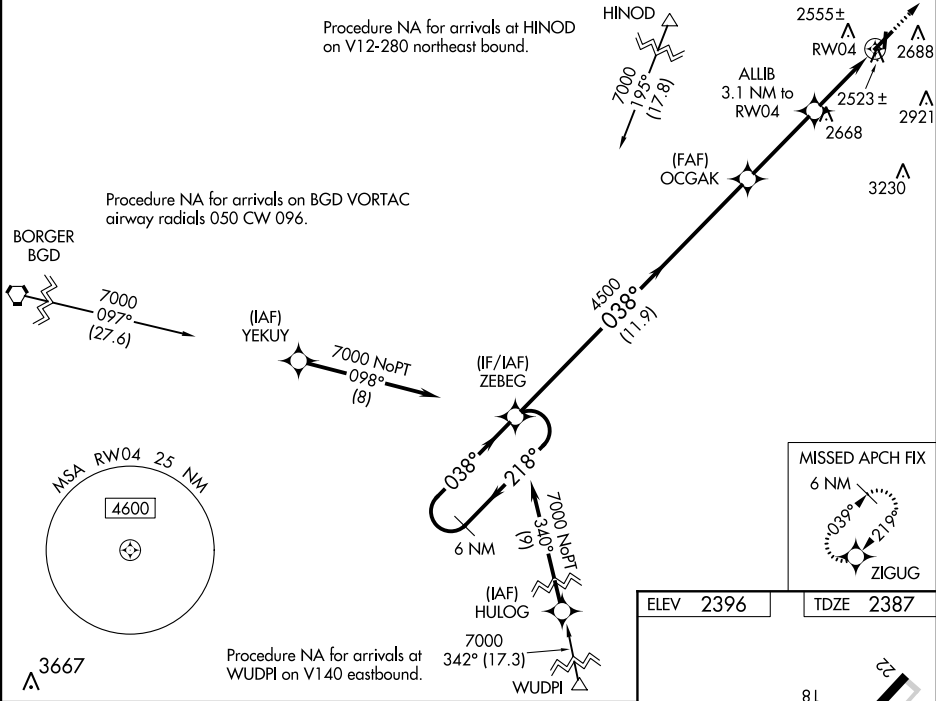
▼

▲

DME/DME RNP-0.3 NA. Circling NA to Rwy 18 and 36. For uncompensated Baro-VNAV systems, LNAV/VNAV NA below -19°C (-2°F) or above 54°C (130°F). When local altimeter setting not received, use Gage altimeter setting: increase LPV DA to 2751 and all visibilities ¼ mile and LNAV/VNAV DA to 2798 and all visibilities ⅜ mile; increase all MDA 120 feet and visibility LNAV Cat C and D and Circling Cat C ¼ mile. VDP and Baro-VNAV NA when using Gage altimeter setting.

MISSED APPROACH:
Climb to 7000 direct ZIGUG and hold, continue climb-in-hold to 7000.

AWOS-3 119.025	ALBUQUERQUE CENTER 127.85 285.475	KANSAS CITY CENTER 126.95 379.2	CTAF 122.9 0
--------------------------	---	---	------------------------



6 NM Holding Pattern		ZEBEG	7000	218°	038°	038°	4500	038°	4500	ALLIB 3.1 NM to RW04	*1.1 NM to RW04	RW04
GP 3.00° TCH 38												
				11.9 NM			3.4 NM			2 NM		1.1
CATEGORY		A	B	C	D							
LPV DA		2637-1		250 (300-1)								
LNAV/VNAV DA		2684-1		297 (300-1)								
LNAV MDA		2780-1		393 (400-1)		2780-1½		393 (400-1½)				
◻ CIRCLING		3040-1		644 (700-1)		3280-2¾		884 (900-2¾)		3340-3 944 (1000-3)		

