

WAAS CH 40107 W17A	APP CRS 163°	Rwy Idg 4200 TDZE 1047 Apt Elev 1047
--	------------------------	---

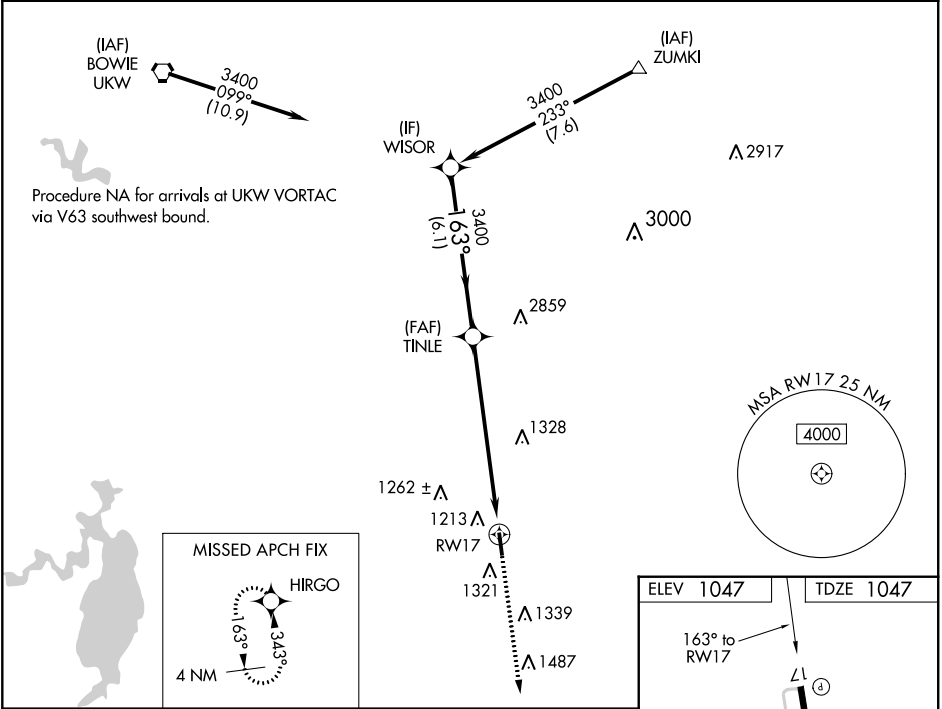
RNAV (GPS) RWY 17
DECATUR MUNI (LUD)

RNP APCH.

When local altimeter setting not received, use Fort Worth Meacham Intl altimeter setting and increase all DAs 113 feet, and all MDAs 120 feet, increase LPV visibilities ¼ mile, LNAV/VNAV visibilities ½ mile, and circling Cat B visibility ¼ mile. Baro-VNAV and VDP NA when using Fort Worth Meacham Intl altimeter setting. For uncompensated Baro-VNAV systems, LNAV/VNAV NA below -17°C (2°F) or above 54°C (130°F).

MISSED APPROACH: Climb to 2600 direct HIRGO and hold.

AWOS-3 118.225	REGIONAL APP CON 118.1 306.95	UNICOM 122.8(CTAF) 0
--------------------------	---	--------------------------------



Procedure Turn NA

GP 3.00° TCH 45

WISOR

TINLE

3400

163°

3400

* 1.3 NM to RW17

* LNAV only

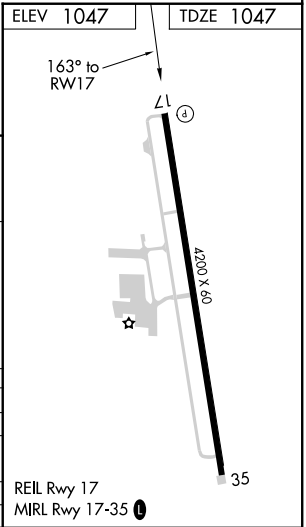
2600 HIRGO

6.1 NM

5.8 NM

1.3 NM

CATEGORY	A	B	C	D
LPV DA	1297-1	250 (300-1)		NA
LNAV/VNAV DA	1459-1½	412 (500-1½)		NA
LNAV MDA	1560-1	513 (600-1)		NA
CIRCLING	1680-1	633 (700-1)		NA



SC-2, 03 DEC 2020 to 31 DEC 2020

SC-2, 03 DEC 2020 to 31 DEC 2020