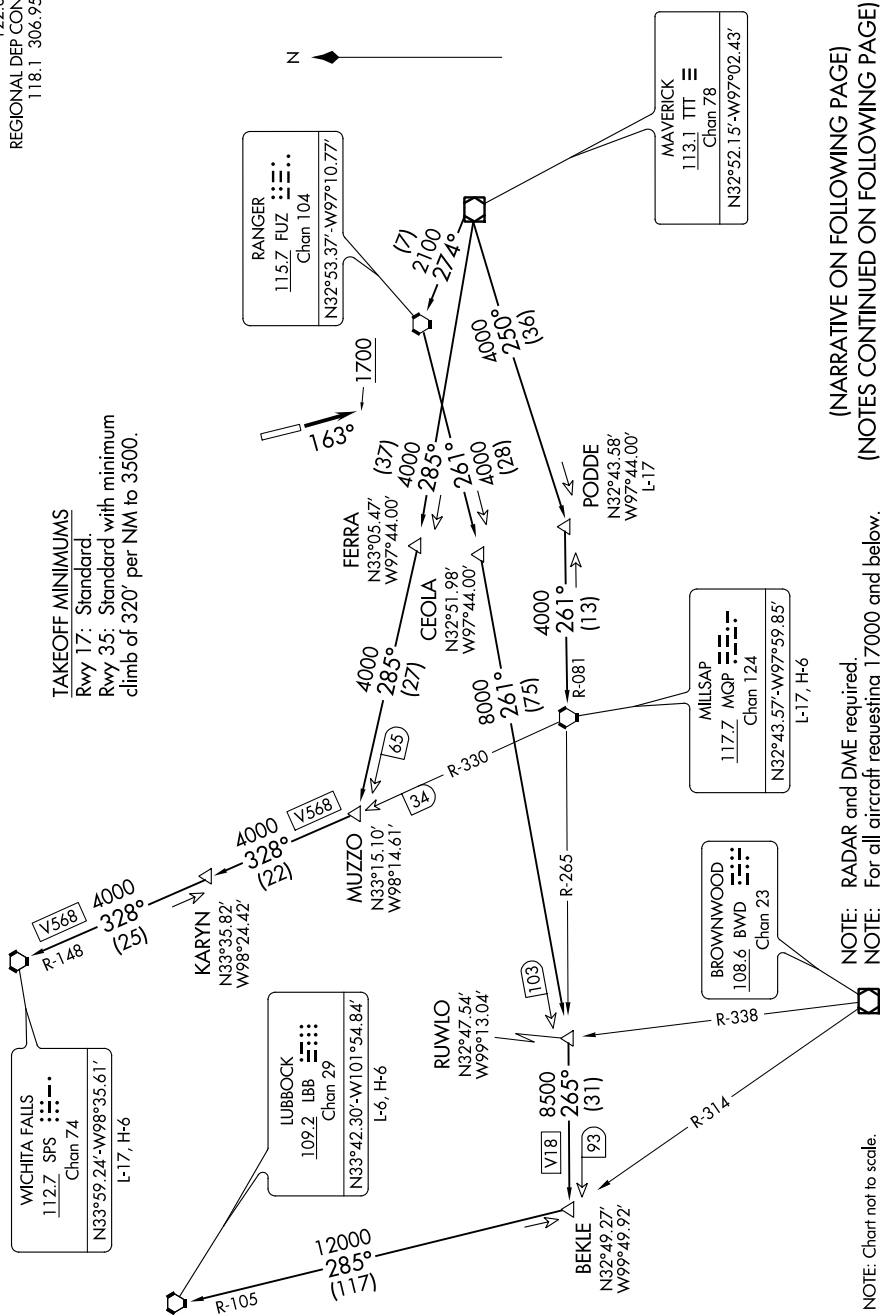


CTAF
122.8
REGIONAL DEP CON
118.1 306.95

Rwy 35: Standard with minimum climb of 320' per NM to 3500.



(NARRATIVE ON FOLLOWING PAGE)
(NOTES CONTINUED ON FOLLOWING PAGE)

NOTE: RADAR and DME required.
NOTE: For all aircraft requesting 17000 and below.

NOTE: Chart not to scale.

SC-2, 03 DEC 2020 to 31 DEC 2020