

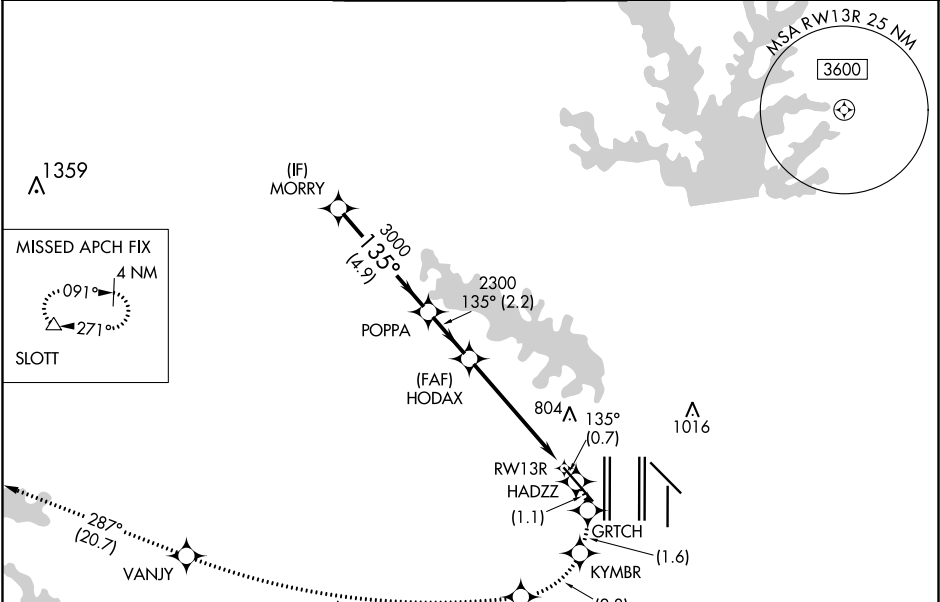
APP CRS	Rwy Idg	9300
135°	TDZE	591
	Apt Elev	606

RNAV (RNP) Z RWY 13R
DALLAS-FORT WORTH INTL (DFW)

RNP AR APCH. RF required.
<div>▼</div> For uncompensated Baro-VNAV systems, procedure NA below -6°C or above 54°C. Missed approach requires RNP less than 1.0.

MALSR 	MISSED APPROACH: (Do not exceed 185K until HRNTT) Climb to 3000 on the RNAV missed approach route to SLOTT and hold.
-----------	----------------------------------------------------------------------------------------------------------------------

D-ATIS ARR 123.775 DEP 135.925	REGIONAL APP CON 133.15 118.1	DFW TOWER 126.55 127.5 EAST 124.15 134.9 WEST	GND CON 121.65 121.8 EAST 121.85 WEST	CLNC DEL 128.25	CPDLC
--------------------------------------	----------------------------------	-----------------------------------------------------	---------------------------------------------	--------------------	-------



(12.2)

▼ HRNTT (2.8)

ELEV 606

D

TDZE 591

3000 tr 135°	HADZZ	GRTCH	KYMBR	HRNTT	VANJY	tr 287°	SLOTT
-----------------	-------	-------	-------	-------	-------	---------	-------

MORRY

POPPA

VGSI and RNAV glidepath not coincident
(VGSI Angle 3.00/TCH 71).

HODAX

3000

135°

3000

135°

2300

2300

RW13R

GP 3.00°
TCH 55°

4.9 NM

2.2 NM

5.2 NM

CATEGORY

A

B

C

D

RNP 0.30 DA

1041/45

450 (500-7%)

AUTHORIZATION REQUIRED

135° to
RW13R