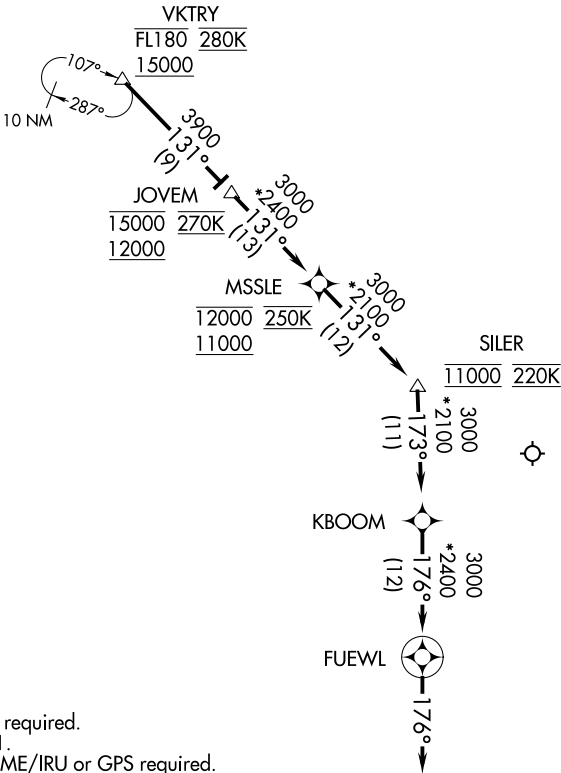


D-ATIS ARR
123.775
REGIONAL APP CON
119.875 284.65



- NOTE: RADAR required.
NOTE: RNAV 1.
NOTE: DME/DME/IRU or GPS required.
NOTE: Turbojet aircraft only.
NOTE: For use when DFW is operating in a north flow.
When DFW is operating in a south flow, file and expect the VKTRY RNAV STAR.

NOTE: Chart not to scale.

ARRIVAL ROUTE DESCRIPTION

From VKTRY on track 131° to cross JOVEM between 12000 and 15000 and at 270K, then on track 131° to cross MSSLE between 11000 and 12000 and at 250K, then on track 131° to cross SILER at 11000 and at 220K, then on track 173° to KBOOM, then on track 176° to FUEWL, then on track 176°.
Expect RADAR vectors to final approach course.