

ILS or LOC RWY 18R
DALLAS-FORT WORTH INTL (DFW)

MISSED APPROACH: Climb to 1100 then climbing right turn to 3000 on heading 250° and FUZ VORTAC R-222 to LIKES INT/FUZ VORTAC 27 DME and hold.

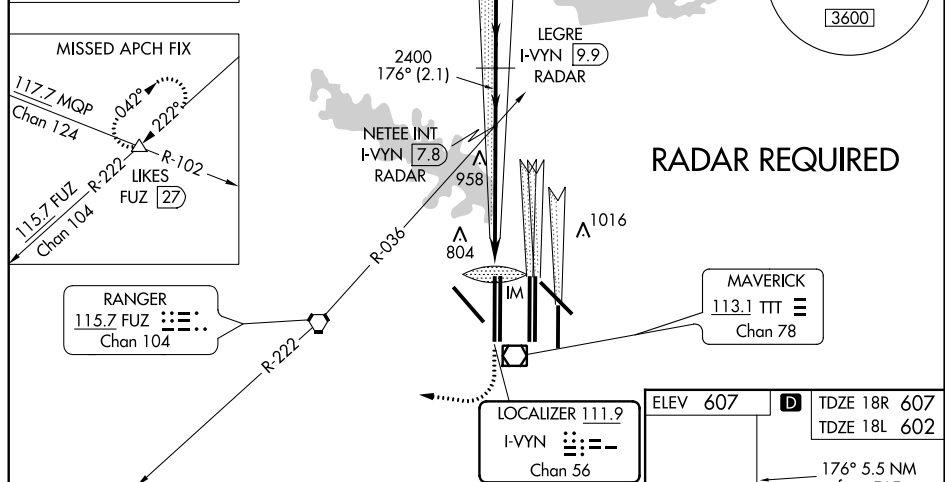


Figure 1: ILS and S-LOC approach charts

Left Chart: ILS and S-LOC Approach

VGSI and ILS glidepath not coincident (VGSI Angle 3.00°/TCH 74).

IKEL RADAR

LEGRE I-VYIN 9.9 RADAR

YOHAN I-VYIN 16.2 RADAR

NETEE INT I-VYIN 7.8 RADAR

IM I-VYIN 2.4

*LOC only

*I-VYIN 4.1

GS 3.00° TCH 59

Distances: 0.1, 1.6 NM, 3.8 NM, 2.1 NM, 6.3 NM, 3.2 NM

CATEGORY	A	B	C	D
S-ILS 18R	807/18		200 (200-½)	
S-LOC 18R	1220/24	613 (700-½)	1220-13/8	613 (700-13/8)
SIDESTEP 18L	1220/50	618 (700-1)	1220-13/8 618 (700-13/8)	1220-11/2 618 (700-11/2)

Right Chart: S-LOC Approach

IKEL RADAR

LEGRE I-VYIN 9.9 RADAR

YOHAN I-VYIN 16.2 RADAR

NETEE INT I-VYIN 7.8 RADAR

IM I-VYIN 2.4

*LOC only

*I-VYIN 4.1

GS 3.00° TCH 59

Distances: 0.1, 1.6 NM, 3.8 NM, 2.1 NM, 6.3 NM, 3.2 NM

CATEGORY	A	B	C	D
S-ILS 18R	807/18		200 (200-½)	
S-LOC 18R	1220/24	613 (700-½)	1220-13/8	613 (700-13/8)
SIDESTEP 18L	1220/50	618 (700-1)	1220-13/8 618 (700-13/8)	1220-11/2 618 (700-11/2)

SC-2, 03 DEC 2020 to 31 DEC 2020

SC-2. 03 DEC 2020 to 31 DEC 2020